

# ADEX A05P Series

5 Port Pilot Operated Solenoid Valve  
Rubber Seal/Sub-base Mounting type

## A05PS25

2-position, single solenoid

## A05PD25

2-position, double solenoid

## A05PD35

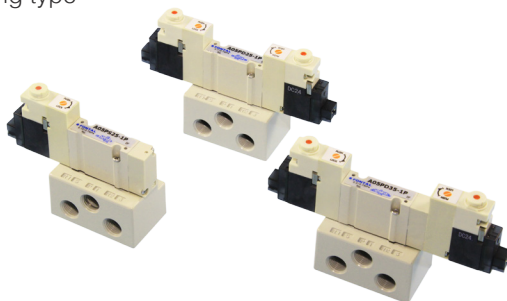
3-position, closed center

## A05PE35

3-position, ABR connect

## A05PO35

3-position, PAB connect



## Specifications

Model No.			Unit	A05PS25	A05PD25	A05PD35	A05PE35	A05PO35
Fluid				Non-lubricated/lubricated air				
Port size				Rc%				
Effective area			mm <sup>2</sup>	5.8		4.5	6.7	
Cv value				0.32		0.25	0.37	
Operating ambient temperature			°C	-5~50				
Pressure range			MPa	0.15~0.7	0.1~0.7	0.2~0.7		
				-0.1~0.7 For external pilot operation				
Maximum Frequency			cycle/min	600		500		
Response Time	DC	ON	s	0.010	0.010	0.010		
		OFF	s	0.010 (0.016)	—	0.015(0.021)		
	AC	ON	s	0.013	0.013	0.013		
		OFF	s	0.016	—	0.021		
Pilot air exhaust				Captured exhaust				
Manual override				Screw driver-operated locking button				
Mounting position				Free				
Shock resistance, vibration resistance			m/s <sup>2</sup>	150/30				
Weight	Without sub-base		g	52	67	69		
	With sub-base		g	108	126	128		



- Service kit not available
- Supply complete-dry air to avoid freezing when temperature of valve site falls below 5°C
- Pressure range of external pilot supply: 0.25~0.7MPa
- Response time in bracket ( ) is displayed with surge suppressor
- Response time shown above is in accordance with JIB B 8375
- Effective area shown above is a value between ports 1 and 2, 4

## Electrical Specifications

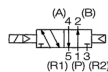
Rated voltage		DC	V	24, 12, 6, 5, 3
		AC	V	100, 110 (50/60Hz)
Permissible voltage fluctuation			%	+10, -10
Power consumption	DC		W	0.6 (with indicator light and surge suppressor), 0.55 (without indicator light and surge suppressor)
	AC	110V	VA	1.4 (with indicator light and surge suppressor), 1.3 (without indicator light and surge suppressor)
Grade of Insulation				JIS grade E
Wiring				Plug-in connector
Surge suppressor				Diode
Indicator light				LED

**A05P****S25****1****P****01****E****Wiring**

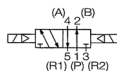
No mark : Without connector  
 E : Connector with wire  
 (Length: 500 mm)

**Switch Form****S25**

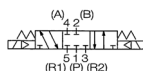
2-position, single solenoid

**D25**

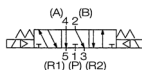
2-position, double solenoid

**D35**

3-position, closed center

**E35**

3-position, ABR connect

**O35**

3-position, PAB connect

**Port size**

No mark : Without sub-base

01 : Rc $\frac{1}{8}$ G1 : \*G $\frac{1}{8}$ N1 : \*NPT $\frac{1}{8}$ F1 : \*NPTF $\frac{1}{8}$ 

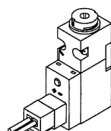
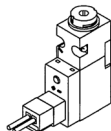
(Valve without sub-base comes with a base gasket & two mounting screws)

**Wiring withdrawal direction****P:**

With indicator light and surge suppressor

**S:**

Without indicator light and surge suppressor

**Special Specification**

No mark : standard  
 (Internal pilot)

X : \*External pilot

**Voltage**

1: DC24V

2: \*DC12V

3: \*DC6V

4: \*DC5V

5: \*DC3V

7: \*AC100V

8: AC110V



\*: Made to order

## Connector with lead wire

**A 0 5 P — D C — C L 5**

### Type

P: For PR type

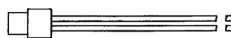
### Lead wire length

5 : 500mm  
10: ※1000mm

### Voltage

DC: For DC  
AC: For AC type

### For PR type



	DC	AC
(+)	Black	Blue
(-)	Red	Blue

(For common use with PR type of A05, A12, and A20)

## Locking cover

**A 0 5 P — L A**



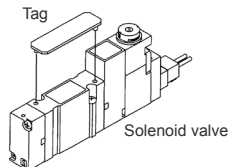
### Color

A: Orange

(For common use with all A05, A12, and A20)

## Tag for solenoid valve

**A 0 5 P — N (Pack of 10)**



(For common use with sub-base mounting type of A05, A12, and A20)

## Sub-base

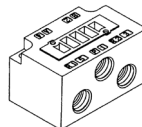
**A 0 5 P — B — 0 1 X**

### Port size

01 : Rc $\frac{1}{8}$   
G1 : ※G $\frac{1}{8}$   
N1 : ※NPT $\frac{1}{8}$   
F1 : ※NPTF $\frac{1}{8}$   
(For common use with A05G)

### Special Specifications

No mark: Standard  
X : For external pilot (with port X)



(For common use with A05G)

## Base gasket

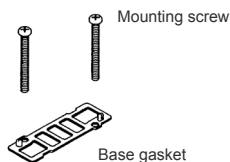
**A 0 5 P X — G**

### Special Specifications

No mark: Standard  
X : For external pilot (with port X)

### Content of kit

SG: Gasket & mounting screws  
G : Only gasket (Pack of 10)  
S : Only mounting screw (Pack of 20)

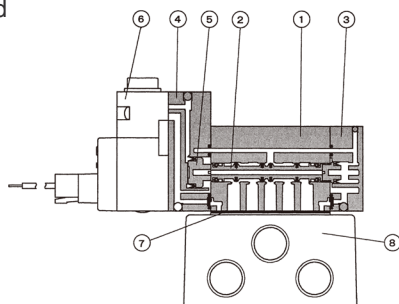


(For common use with A05P)

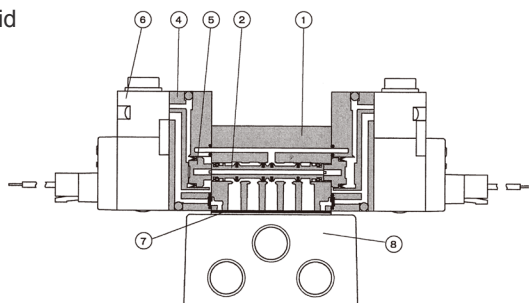


※: Made to order

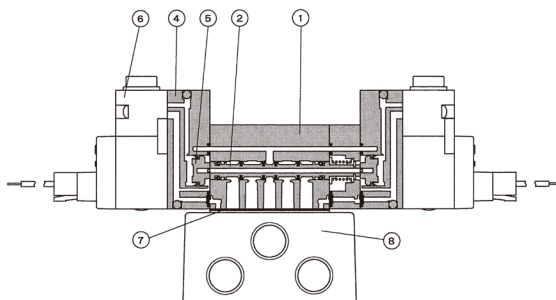
⊙ 2-position Single solenoid



⊙ 2-position Double solenoid



⊙ 3-position Closed center  
3-position ABR connect  
3-position PAB connect

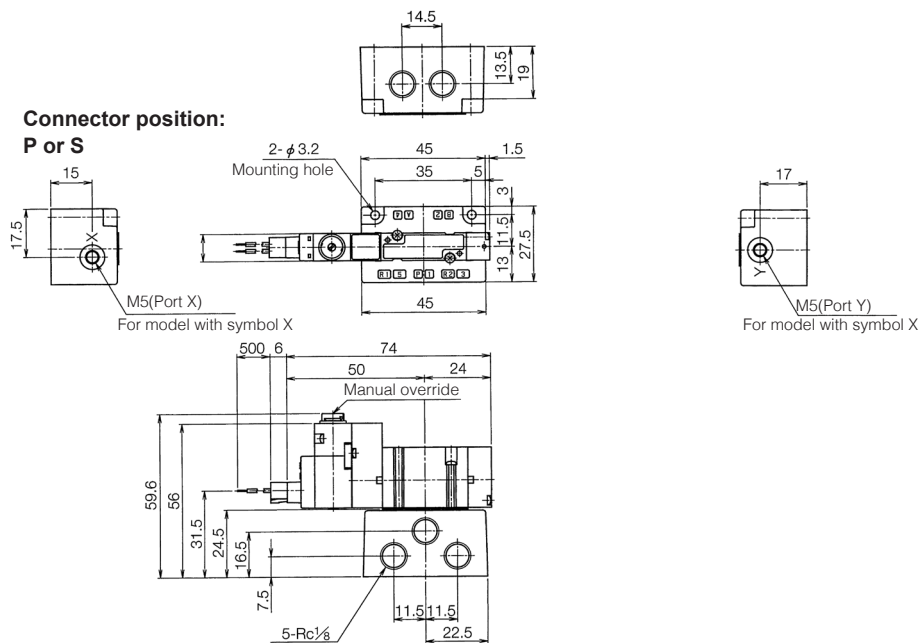


### Main Component

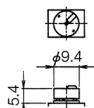
No.	Description	Material
1	Body	Zinc die-casting
2	Spool assembly	Aluminium alloy/NBR
3	End cover	Resin
4	Piston head	Resin
5	Piston	Resin
6	Pilot valve	Refer to A00 Series
7	Base gasket	NBR
8	Sub-base	Alluminium die-casting

A05PS25

(Unit: mm)



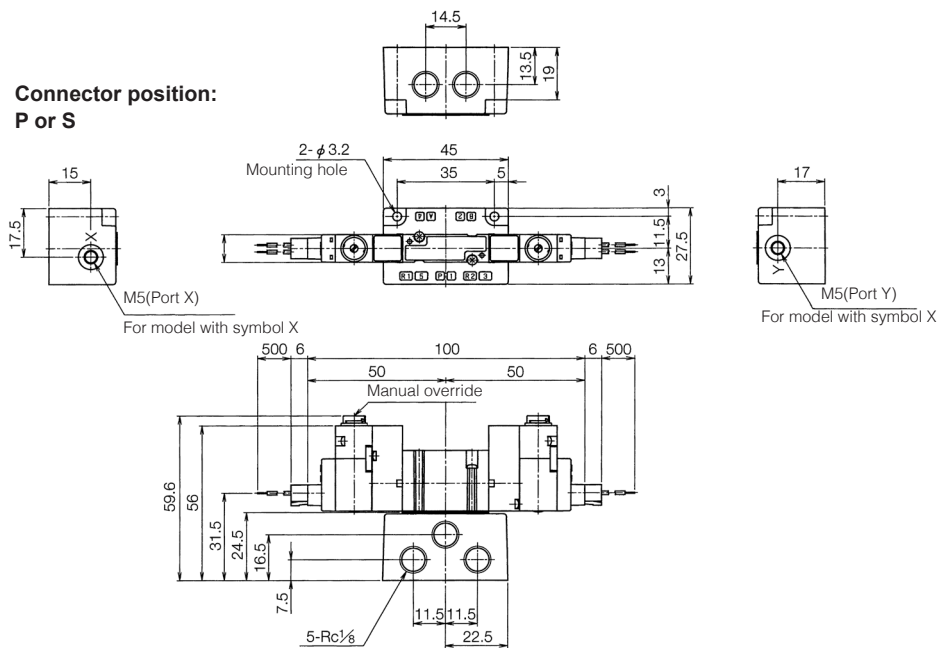
**Manual locking cover**



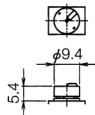
A05PD25

(Unit: mm)

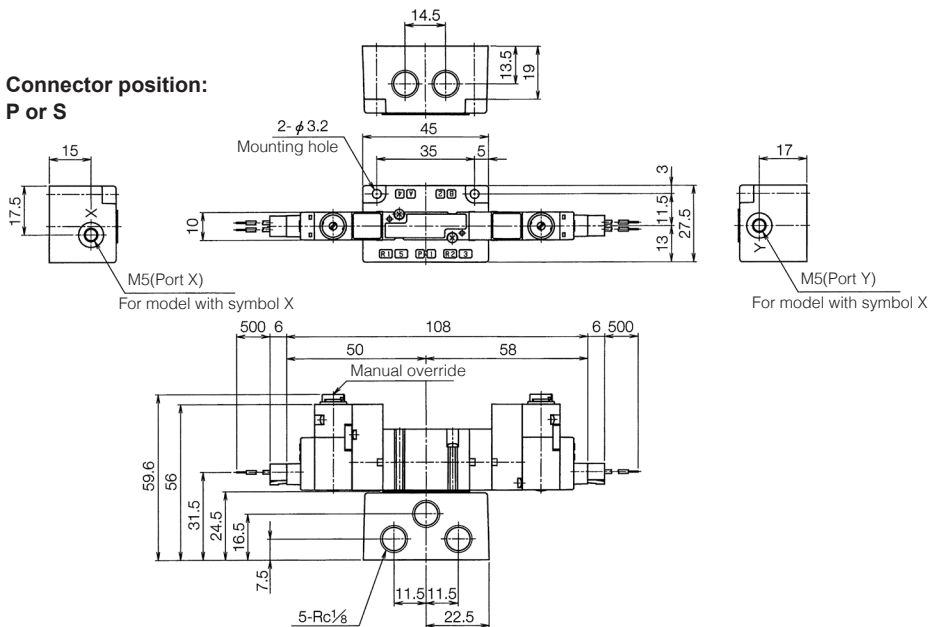
**Connector position:  
P or S**



**Manual locking cover**



**Connector position:  
P or S**



**Manual locking cover**

