

# ADEX A12P Series

5 Port Pilot Operated Solenoid Valve  
Rubber Seal/Sub-base Mounting type

## A12PS25

2-position, single solenoid

## A12PD25

2-position, double solenoid

## A12PD35

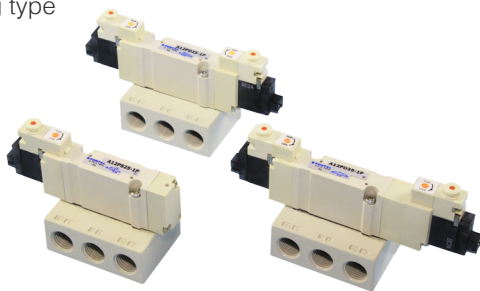
3-position, closed center

## A12PE35

3-position, ABR connect

## A12PO35

3-position, PAB connect



## Specifications

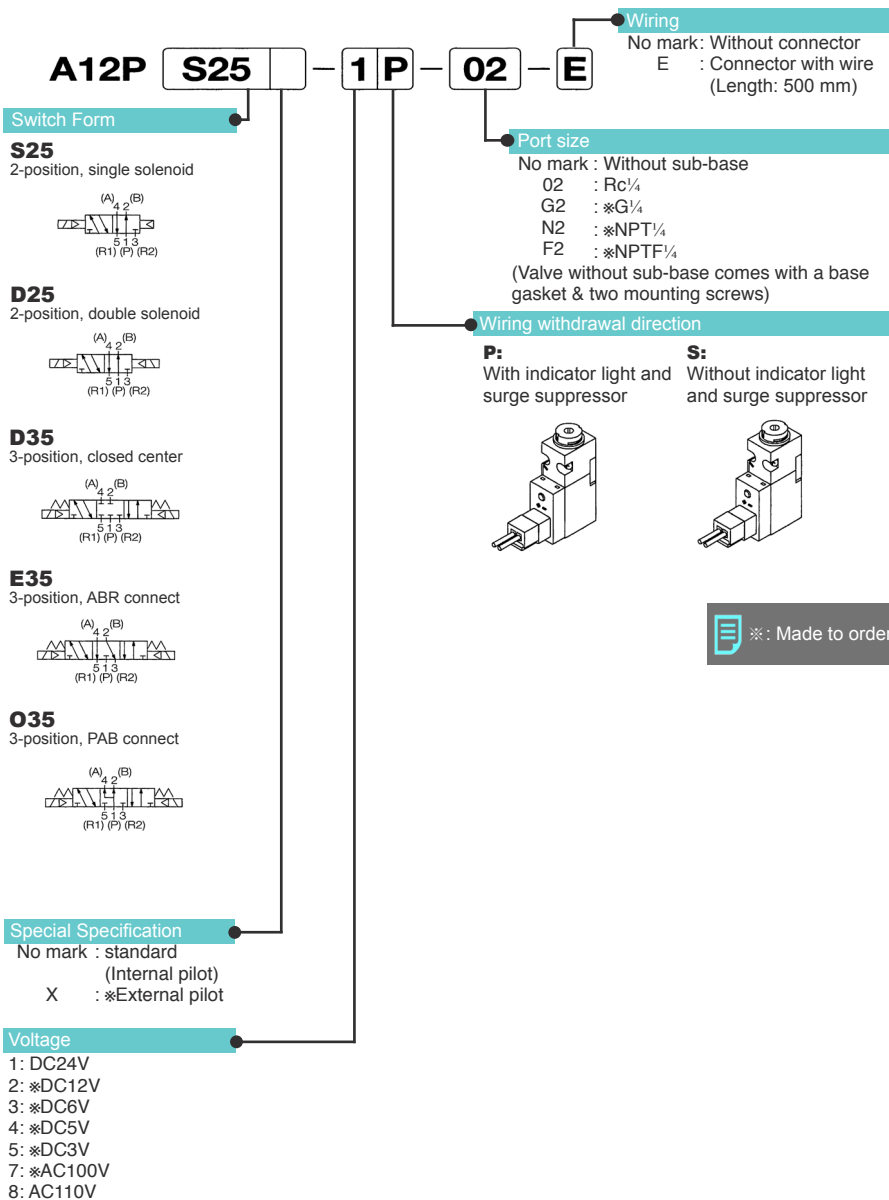
Model No.			Unit	A12PS25	A12PD25	A12PD35	A12PE35	A12PO35
Fluid				Non-lubricated/lubricated air				
Port size				RC ¼				
Effective area			mm²	11.1		7.6		14.1
Cv value				0.61		0.42		0.78
Operating ambient temperature			°C	-5~50				
Pressure range			MPa	0.15~0.7	0.1~0.7	0.2~0.7		
				-0.1~0.7 For external pilot operation				
Maximum Frequency			cycle/min	600		500		
Response Time	DC	ON	s	0.015	0.010	0.012		
		OFF	s	0.018 (0.024)	—	0.036(0.042)		
	AC	ON	s	0.018	0.013	0.015		
		OFF	s	0.024	—	0.041		
Pilot air exhaust				Captured exhaust				
Manual override				Screwdriver-operated locking button				
Mounting position				Free				
Shock resistance, vibration resistance			m/s²	150/30				
Weight	Without sub-base		g	60	75	79		
	With sub-base		g	143	161	166		



- Supply complete-dry air to avoid freezing when temperature of valve site falls below 5°C
- Pressure range of external pilot supply: 0.25~0.7MPa
- Response time in bracket ( ) is displayed with surge suppressor
- Response time shown above is in accordance with JIB B 8375
- Effective area shown above is a value between ports 1 and 2, 4

## Electrical Specifications

Rated voltage	DC	V	24, 12, 6, 5, 3	
	AC	V	100, 110 (50/60Hz)	
Permissible voltage fluctuation		%	+10, -10	
Power consumption	DC	W	0.6 (with indicator light and surge suppressor), 0.55 (without indicator light and surge suppressor)	
	AC	110V VA	1.4 (with indicator light and surge suppressor), 1.3 (without indicator light and surge suppressor)	
Grade of Insulation			JIS grade E	
Wiring			Plug-in connector	
Surge suppressor			Diode	
Indicator light			LED	



## Connector with lead wire

**A 0 5 P — D C — C L 5**

### Type

P: For PR type

### Lead wire length

5 : 500mm

10: ※1000mm

### Voltage

DC: For DC

AC: For AC type

### For PR type



	DC	AC
(+)	Black	Blue
(-)	Red	Blue

(For common use with PR type of A05, A12, and A20)

## Locking cover

**A 0 5 P — L A**



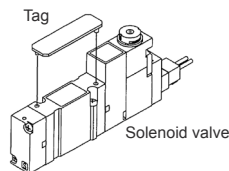
### Color

A: Orange

(For common use with all A05, A12, and A20)

## Tag for solenoid valve

**A 0 5 P — N (Pack of 10)**



(For common use with sub-base mounting type of A05, A12, and A20)

## Sub-base

**A 1 2 P — B — 0 1 X**

### Port size

02: Rc $\frac{1}{4}$

G2: ※G $\frac{1}{4}$

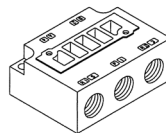
N2: ※NPT $\frac{1}{4}$

F2: ※NPTF $\frac{1}{4}$

### Special Specifications

No mark: Standard

X : For external pilot (with port X)



(For common use with A12G)

## Base gasket

**A 1 2 P X — G**

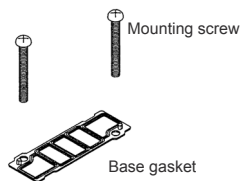
### Special Specifications

No mark: Standard

X : For external pilot (with port X)

### Content of kit

SG: Gasket & mounting screws  
G : Only gasket (Pack of 10)  
S : Only mounting screw (Pack of 20)

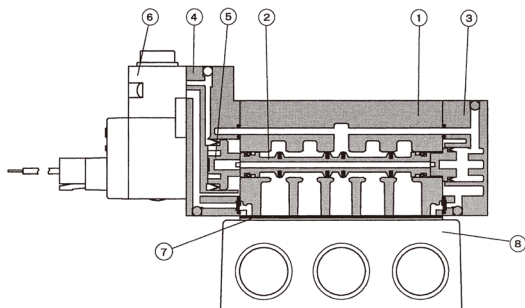


(For common use with A12G)

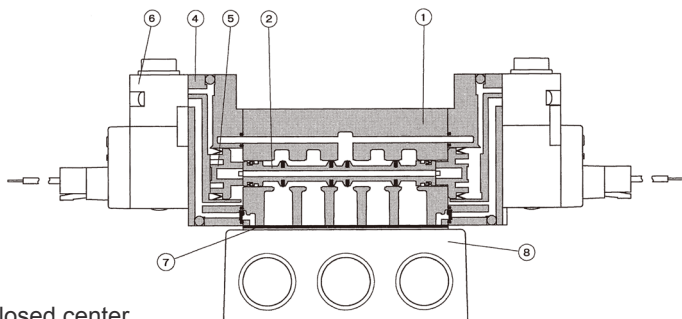


※: Made to order

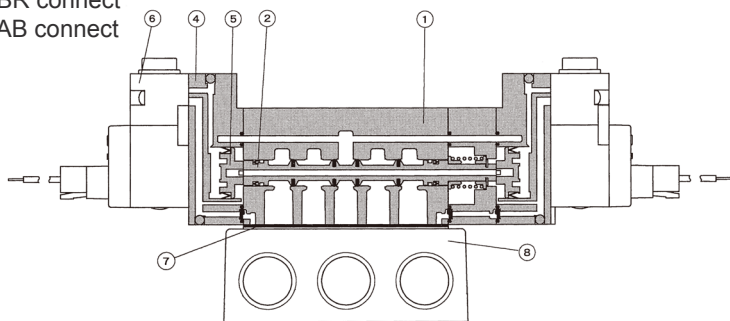
⊙ 2-position Single solenoid



⊙ 2-position Double solenoid



⊙ 3-position Closed center  
3-position ABR connect  
3-position PAB connect



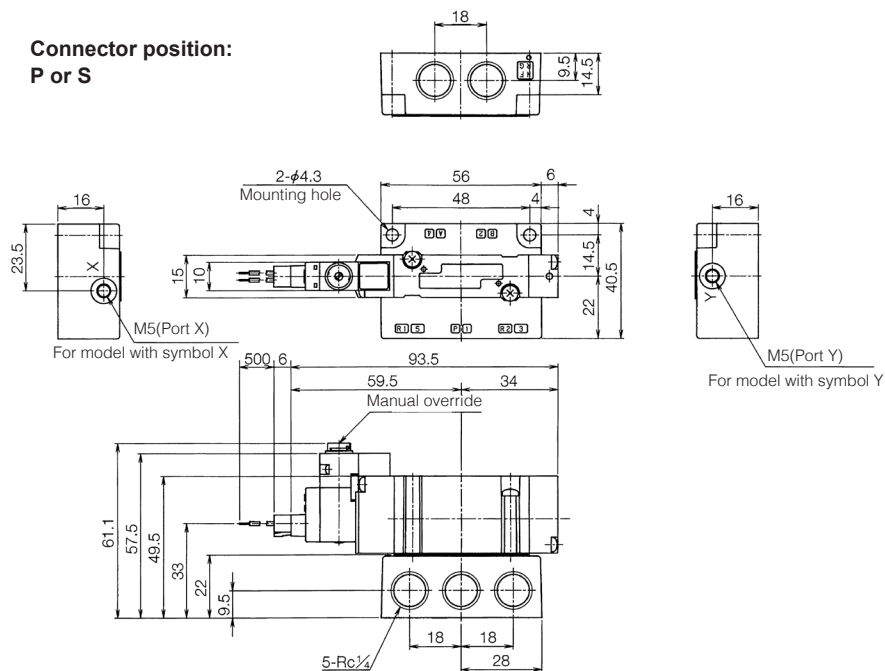
### Main Component

No.	Description	Material
1	Body	Zinc die-casting
2	Spool assembly	Aluminium alloy/NBR
3	End cover	Resin
4	Piston head	Resin
5	Piston	Resin
6	Pilot valve	Refer to A00 Series
7	Base gasket	NBR
8	Sub-base	Alluminium die-casting

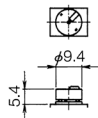
A12PS25

(Unit: mm)

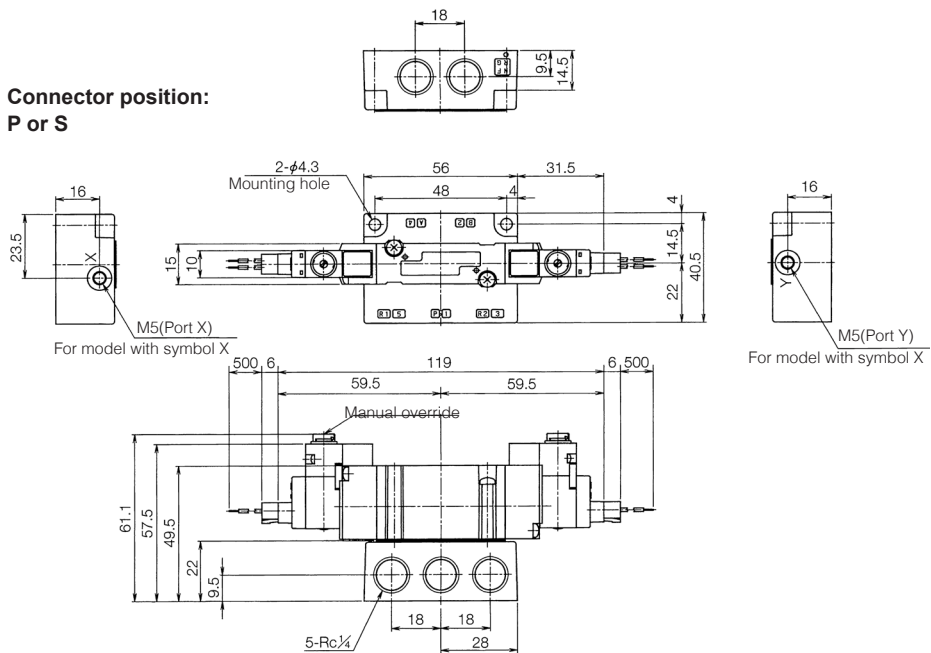
**Connector position:  
P or S**



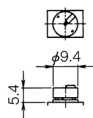
**Manual locking cover**



**Connector position:  
P or S**



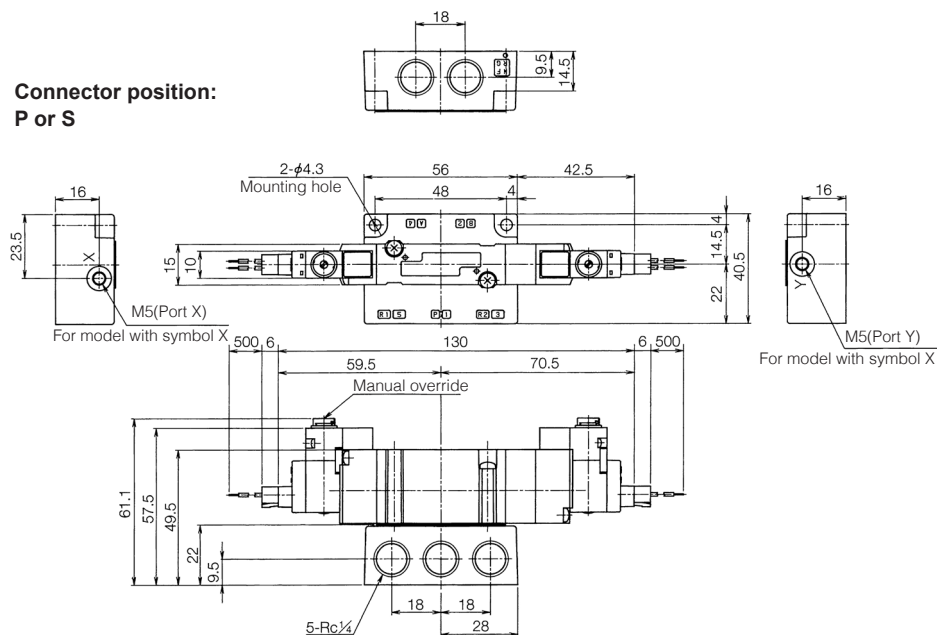
**Manual locking cover**



A12PD35, A12PE35, A12PO35

(Unit: mm)

**Connector position:  
P or S**



**Manual locking cover**

