

ADEX MFO-A20P, A20R

Individual Connector Type Manifold
Bar Type

MFS□-A20P

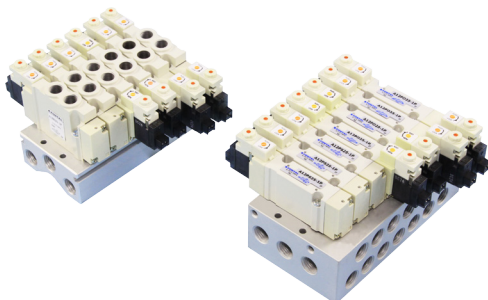
Common SUP, common exhaust,
ports 2 & 4 on the side

MFX□-A20P

Common SUP, common exhaust,
common external pilot, ports 2 & 4 on
the side

MFU□-A20R

Common SUP, common exhaust,
ports 2 & 4 on the valve body



Manifold Specifications

		For A20P Series		For A20R Series
		MFS□-A20P	MFX□-A20P	MFU□-A20R
Type of manifold		Common SUP, common exhaust, pilot valve captured exhaust, ports 2 & 4 on the side	Common SUP, com- mon exhaust, com- mon external pilot, pilot valve captured exhaust, ports 2 & 4 on the side	Common SUP, common exhaust, pilot valve captured exhaust, ports 2 & 4 on the valve body
Port size	Ports 1, 3, 5	Rc¼	Rc¼	Rc¼
	Ports 2, 4	Rc¼	Rc¼	Rc¼
	Port Y	—	M5	—
	Port X	—	M5	—
Number of stations		2~20		
Installation		Direct mount		
Mountable solenoid valve		A20PS25 A20PD25 A20PD35 A20PE35 A20PO35	A20PS25X A20PD25X A20PD35X A20PE35X A20PO35X	A20RS25 A20RD25 A20RD35 A20RE35 A20RO35
Blank plate		A20P-BP		A20R-BP



Tagging method

Specify the type and number of manifolds and solenoid valves, as well as number of blank plate if needed.

Manifold for A20P Series



Type of manifold

MFS:
Common SUP, common exhaust, ports 2 & 4 on the side
MFx:
Common SUP, common exhaust, common external pilot, ports 2 & 4 on the side

Mountable solenoid valve series
A20P

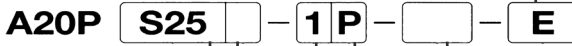
Port size 2, 4

02: Rc1/4
(Note)when using G, NPT, NPTF, please consult FONTAL first

Number of stations

2 : 2 station
⋮ : ⋮
20 : 20 station

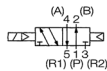
Mountable solenoid valve



Switch Form

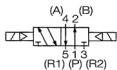
S25

2-position, single solenoid



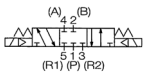
D25

2-position, double solenoid



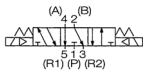
D35

3-position, closed center



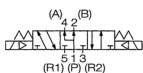
E35

3-position, ABR connect



O35

3-position, PAB connect



Wiring

No mark: Without connector
E : Connector with wire (Length: 500 mm)

Port size 2, 4

No mark: Without sub-base.
(Note) A gasket & two mounting screws come with valve.

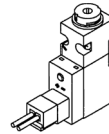
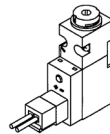
Wiring withdrawal direction

P:

With indicator light and surge suppressor

S:

Without indicator light and surge suppressor



Voltage

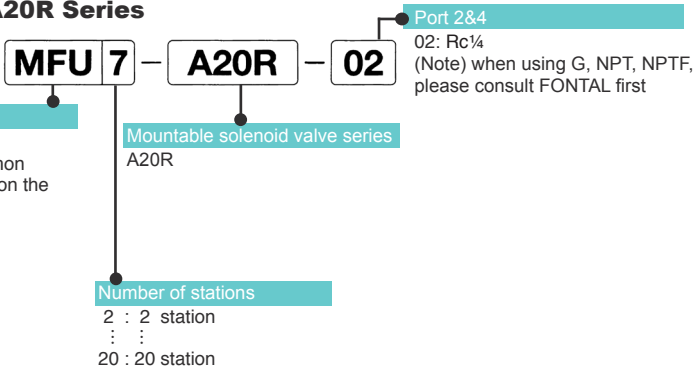
- 1: DC24V
- 2: *DC12V
- 3: *DC6V
- 4: *DC5V
- 5: *DC3V
- 7: *AC100V
- 8: AC110V

※ : Made to order

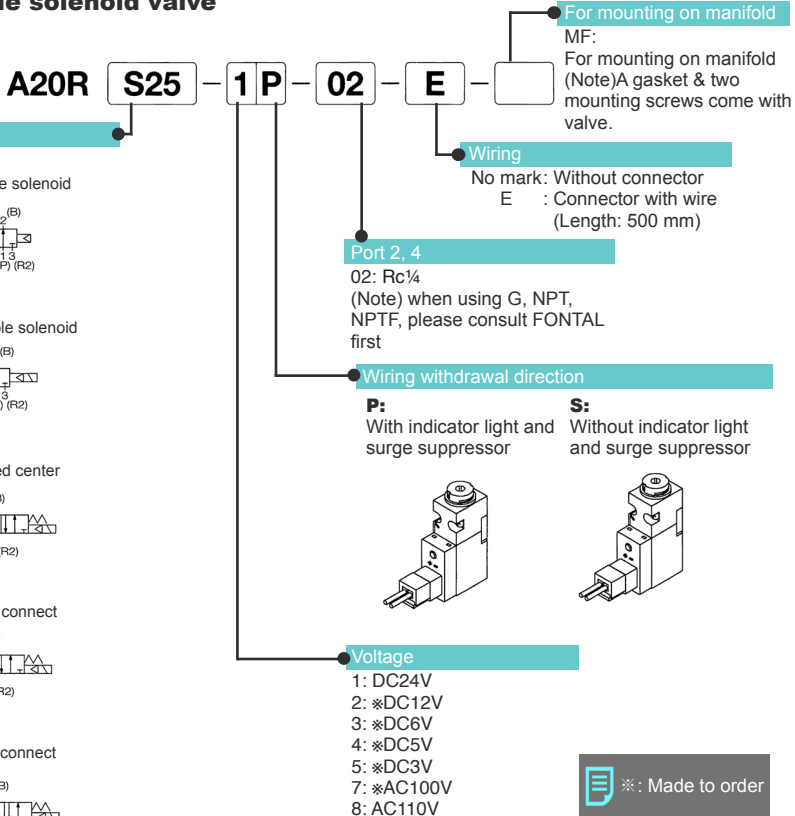
Special Specification

No mark: standard (Internal pilot)
X : *External pilot
(Note)Only when it is mounted on MFX, external pilot can be used.

Manifold for A20R Series



Mountable solenoid valve



※: Made to order

Connector with lead wire

A 0 5 P — D C — C L 5

Type

P: For PR type

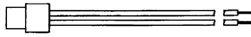
Lead wire length

5 : 500mm
10: ※1000mm

Voltage

DC: For DC
AC: For AC type

For PR type



(For common use with PR type of A05, A12, and A20)

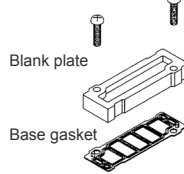
	DC	AC
(+)	Black	Blue
(-)	Red	Blue

Blank plate

For A20P

A 2 0 P — B P

Mounting screw

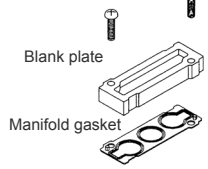


(For common use with A20G)

For A20R

A 2 0 R — B P

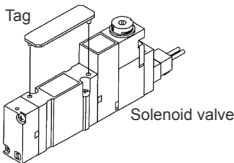
Mounting screw



(For common use with A12F)

Tag for solenoid valve

A 0 5 P — N (Pack of 10)



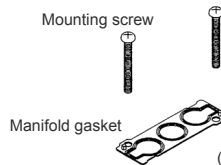
(For common use with sub-base mounting type of A05, A12, and A20)

Base gasket

A 2 0 R — G

Content of kit

- SG : Gasket & mounting screws
- G : Only gasket (Pack of 10)
- S : Only mounting screw (Pack of 20)



(For common use with A12F)

Base gasket

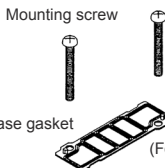
A 2 0 P X — G

Special Specifications

No mark: Standard
X : For external pilot (with port X)

Content of kit

- SG: Gasket & mounting screws
- G : Only gasket (Pack of 10)
- S : Only mounting screw (Pack of 20)



(For common use with A20G)

Locking cover

A 0 5 P — L A



Color

A: Orange

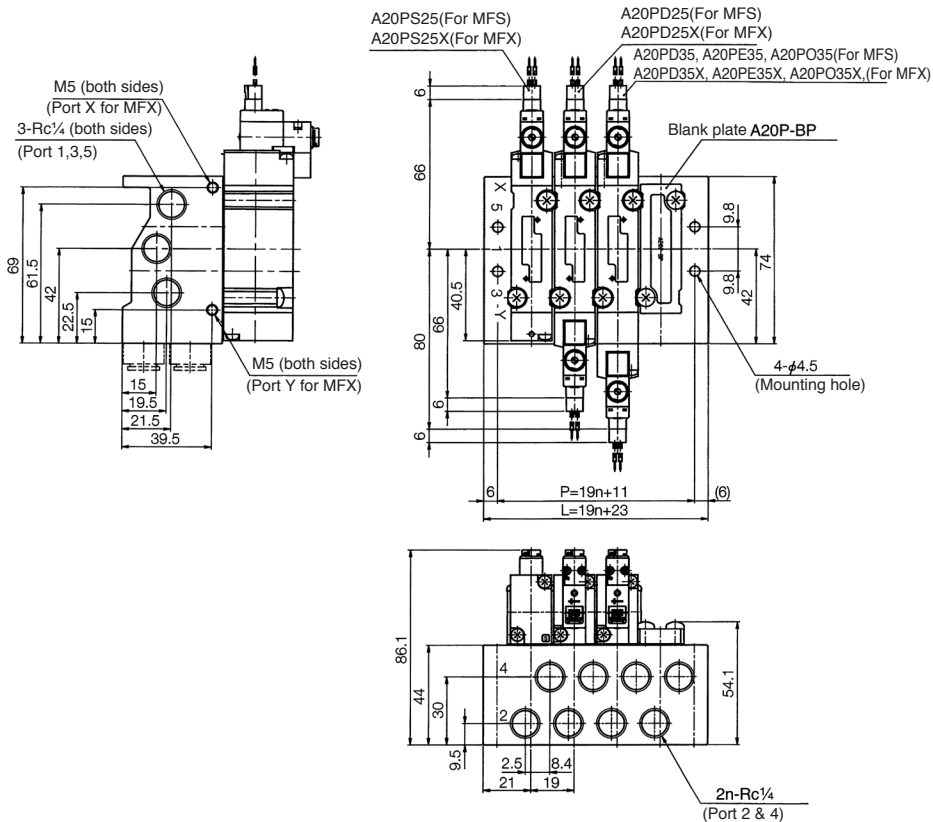
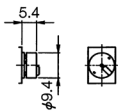
(For common use with all A05, A12, and A20)

※ : Made to order

MFS□-A20P-02, MFX□-A20P-02

(Unit: mm)

Manual locking cover



MFU□-A20R-02

(Unit: mm)

Manual locking cover

