

ADEX A05G Series

5 Port Pilot Operated Solenoid Valve
Rubber Seal/Sub-base Mounting type

A05GS25

2-position, single solenoid

A05GD25

2-position, double solenoid

A05GD35

3-position, closed center

A05GE35

3-position, ABR connect

A05GO35

3-position, PAB connect



Specifications

Model No.			Unit	A05GS25	A05GD25	A05GD35	A05GE35	A05GO35
Fluid				Non-lubricated/lubricated air				
Port size				RC ⅜				
Effective area			mm²	5.8		4.5		6.7
Cv value				0.32		0.25		0.37
Operating ambient temperature			°C	-5~50				
Pressure range			MPa	0.15~0.7	0.1~0.7	0.2~0.7		
				-0.1~0.7 For external pilot operation				
Maximum Frequency			cycle/min	600		500		
Response Time	DC	ON	s	0.011	0.010	0.012		
		OFF	s	0.011 (0.017)	—	0.032 (0.038)		
Pilot air exhaust				Captured exhaust				
Manual override				Screw driver-operated locking button				
Mounting position				Free				
Shock resistance, vibration resistance			m/s²	150/30				
Weight	Without sub-base		g	58	66	68		
	With sub-base		g	114	124	126		



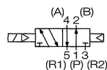
- Service kit not available
- Supply complete-dry air to avoid freezing when temperature of valve site falls below 5°C
- Pressure range of external pilot supply: 0.25~0.7MPa
- Response time in bracket () is displayed with surge suppressor
- Response time shown above is in accordance with JIB B 8375
- Effective area shown above is a value between ports 1 and 2, 4

Electrical Specifications

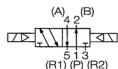
Rated voltage	V	DC24, 12, 6, 5, 3
Permissible voltage fluctuation	%	+10, -10
Power consumption	W	0.6 (with indicator light and surge suppressor), 0.55 (without indicator light and surge suppressor)
Grade of Insulation		JIS grade E
Wiring		Plug-in connector
Surge suppressor		Diode
Indicator light		LED

A05G**S25****1 P****01****S****Switch Form****S25**

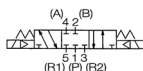
2-position, single solenoid

**D25**

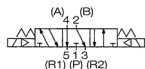
2-position, double solenoid

**D35**

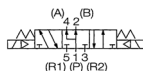
3-position, closed center

**E35**

3-position, ABR connect

**O35**

3-position, PAB connect

**Special Specification**

No mark : standard

(Internal pilot)

X : ※External pilot

Voltage

1: DC24V

2: ※DC12V

3: ※DC6V

4: ※DC5V

5: ※DC3V

Wiring

No mark: Without connector

S : Connector with lead wire for single solenoid (Length: 500 mm)

D : Connector with lead wire for double solenoid (Length: 500 mm)

Port size

No mark : Without sub-base

01 : Rc $\frac{1}{8}$ G1 : ※G $\frac{1}{8}$ N1 : ※NPT $\frac{1}{8}$ F1 : ※NPTF $\frac{1}{8}$

(Valve without sub-base comes with a base gasket & two mounting screws)

Wiring withdrawal direction**NPN type**

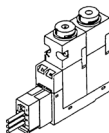
P: With indicator light and surge suppressor

S: Without indicator light and surge suppressor

PNP type

※M: With indicator light and surge suppressor

※J: Without indicator light and surge suppressor



※: Made to order

Connector with lead wire

A 0 5 G S - D C - C L 5 - M

Polarity

No mark: NPN type
M : *PNP type

Lead wire length

5: 500mm
10: *1000mm

Voltage

DC: For DC

Type

GS : For GF type
single solenoid
GD : For GF type
double solenoid

For GF type single solenoid



For GF type double solenoid



(For common use with GF type of A05, A12, and A20)

Locking cover

A 0 5 P - L A



Color

A: Orange
(For solenoid A side)
B: Green
(For solenoid B side)

(For common use with all
A05, A12, and A20)

Sub-base

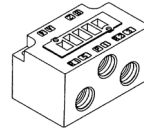
A 0 5 P - B - 0 1 X

Port size

01: Rc $\frac{1}{8}$
G1: *G $\frac{1}{8}$
N1: *NPT $\frac{1}{8}$
F1: *NPTF $\frac{1}{8}$

Special Specifications

No mark: Standard
X : For external
pilot (with
port X)



(For common use with A05P)

Base gasket

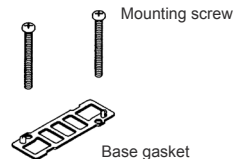
A 0 5 P X - G

Special Specifications

No mark: Standard
X : For external
pilot (with
port X)

Content of kit

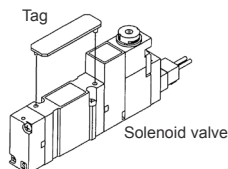
SG: Gasket &
mounting screws
G : Only gasket (Pack
of 10)
S : Only mounting
screw (Pack of 20)



(For common use with A05P)

Tag for solenoid valve

A 0 5 P - N (Pack of 10)

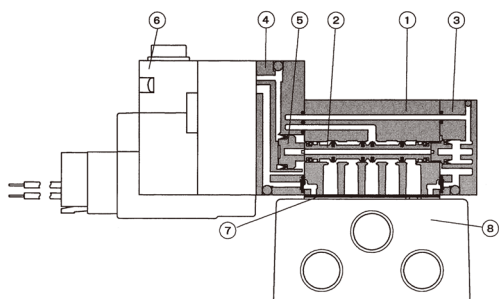


(For common use with sub-base mounting type of
A05, A12, and A20)

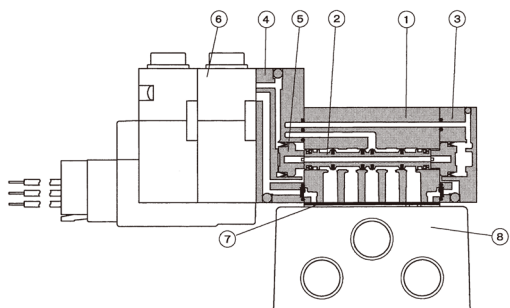


*: Made to order

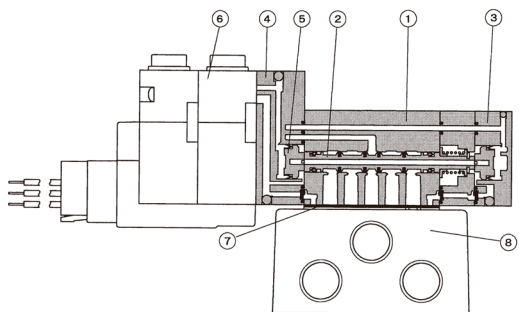
☉ 2-position Single solenoid



☉ 2-position Double solenoid



☉ 3-position Closed center
3-position ABR connect
3-position PAB connect



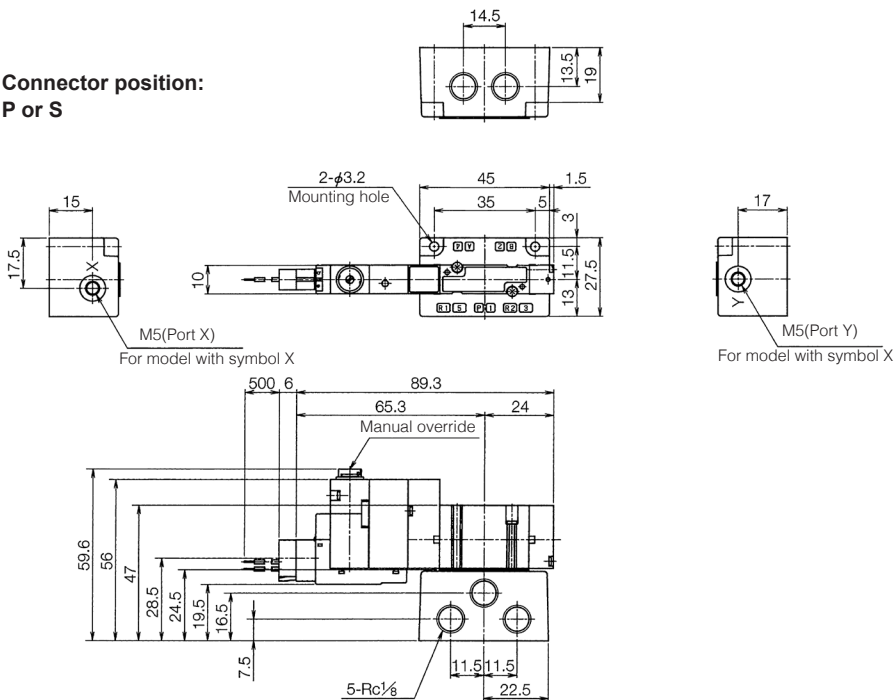
Main Component

No.	Description	Material
1	Body	Zinc die-casting
2	Spool assembly	Aluminium alloy/NBR
3	End cover	Resin
4	Piston head	Resin
5	Piston	Resin
6	Pilot valve	Refer to A00 Series
7	Base gasket	NBR
8	Sub-base	Alluminium die-casting

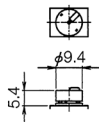
A05GS25

(Unit: mm)

Connector position:
P or S



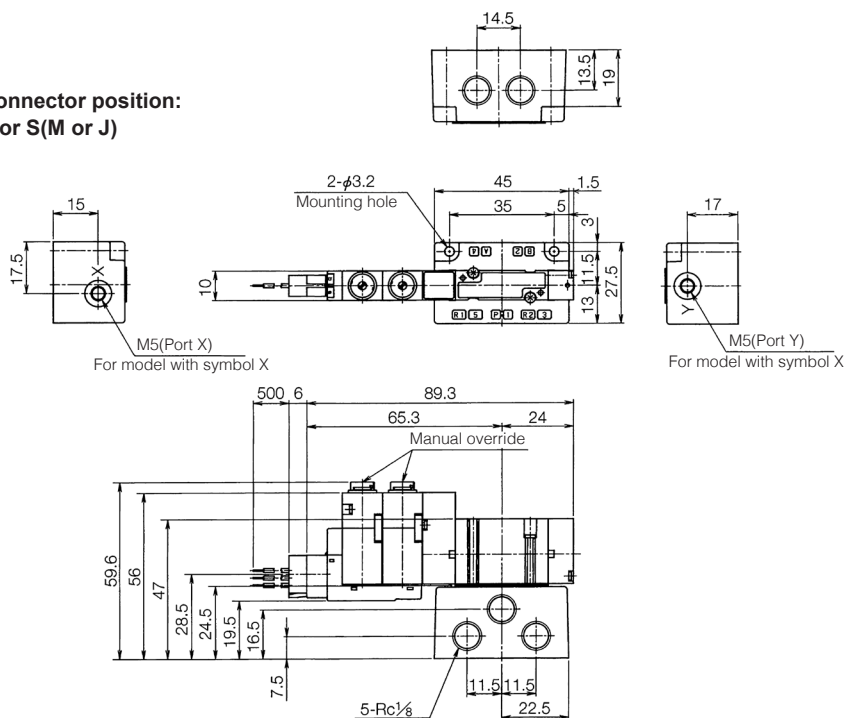
Manual locking cover



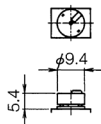
A05GD25

(Unit: mm)

Connector position:
P or S(M or J)



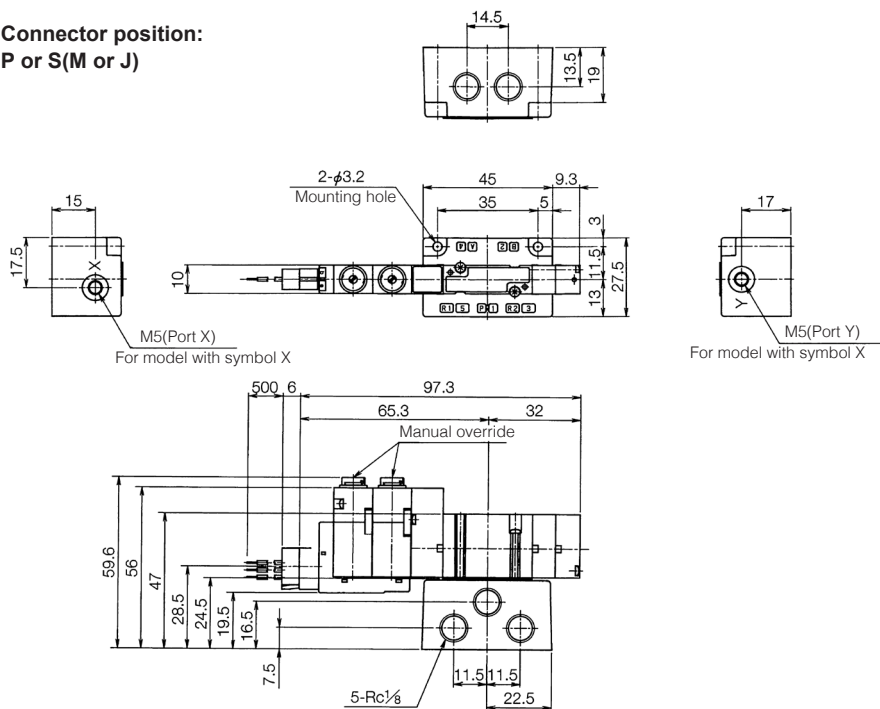
Manual locking cover



A05GD35, A05GE35, A05GO35

(Unit: mm)

Connector position:
P or S(M or J)



Manual locking cover

