

ADEX A12G Series

5 Port Pilot Operated Solenoid Valve
Rubber Seal/Sub-base Mounting type

A12GS25

2-position, single solenoid

A12GD25

2-position, double solenoid

A12GD35

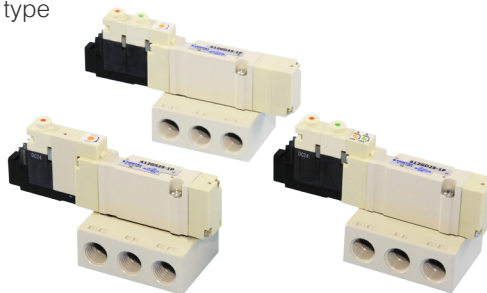
3-position, closed center

A12GE35

3-position, ABR connect

A12GO35

3-position, PAB connect



Specifications

| Model No. | | | Unit | A12GS25 | A12GD25 | A12GD35 | A12GE35 | A12GO35 |
|--|------------------|-----|-----------|---------------------------------------|---------|---------------|---------|---------|
| Fluid | | | | Non-lubricated/lubricated air | | | | |
| Port size | | | | RC ¼ | | | | |
| Effective area | | | mm² | 11.1 | | 7.6 | | 14.1 |
| Cv value | | | | 0.61 | | 0.42 | | 0.78 |
| Operating ambient temperature | | | °C | -5~50 | | | | |
| Pressure range | | | MPa | 0.15~0.7 | 0.1~0.7 | 0.2~0.7 | | |
| | | | | -0.1~0.7 For external pilot operation | | | | |
| Maximum Frequency | | | cycle/min | 600 | | 500 | | |
| Response Time | DC | ON | s | 0.015 | 0.012 | 0.017 | | |
| | | OFF | s | 0.020 (0.026) | — | 0.065 (0.071) | | |
| Pilot air exhaust | | | | Captured exhaust | | | | |
| Manual override | | | | Screw driver-operated locking button | | | | |
| Mounting position | | | | Free | | | | |
| Shock resistance, vibration resistance | | | m/s² | 150/30 | | | | |
| Weight | Without sub-base | | g | 65 | 74 | 78 | | |
| | With sub-base | | g | 149 | 159 | 163 | | |



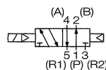
- Service kit not available
- Supply complete-dry air to avoid freezing when temperature of valve site falls below 5°C
- Pressure range of external pilot supply: 0.25~0.7MPa
- Response time in bracket () is displayed with surge suppressor
- Response time shown above is in accordance with JIB B 8375
- Effective area shown above is a value between ports 1 and 2, 4

Electrical Specifications

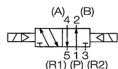
| | | |
|---------------------------------|---|---|
| Rated voltage | V | DC24, 12, 6, 5, 3 |
| Permissible voltage fluctuation | % | +10, -10 |
| Power consumption | W | 0.6 (with indicator light and surge suppressor), 0.55 (without indicator light and surge suppressor) |
| Grade of Insulation | | JIS grade E |
| Wiring | | Plug-in connector |
| Surge suppressor | | Diode |
| Indicator light | | LED |

A12G**S25****1****P****02****S****Switch Form****S25**

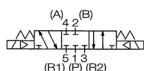
2-position, single solenoid

**D25**

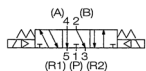
2-position, double solenoid

**D35**

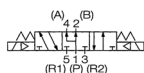
3-position, closed center

**E35**

3-position, ABR connect

**O35**

3-position, PAB connect

**Special Specification**

No mark : standard

(Internal pilot)

X : ※External pilot

Voltage

1: DC24V

2: ※DC12V

3: ※DC6V

4: ※DC5V

5: ※DC3V

Wiring

No mark: Without connector

S : Connector with lead wire for single solenoid (Length: 500 mm)

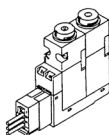
D : Connector with lead wire for double solenoid (Length: 500 mm)

Port size

No mark : Without sub-base

02 : Rc $\frac{1}{4}$ G2 : ※G $\frac{1}{4}$ N2 : ※NPT $\frac{1}{4}$ F2 : ※NPTF $\frac{1}{4}$

(Valve without sub-base comes with a base gasket & two mounting screws)

Wiring withdrawal direction**NPN type**

P: With indicator light and surge suppressor

S: Without indicator light and surge suppressor

PNP type

※M: With indicator light and surge suppressor

※J: Without indicator light and surge suppressor



※ : Made to order

Connector with lead wire

A 0 5 G S - D C - C L 5 - M

Polarity
No mark: NPN type
M : *PNP type

Lead wire length
5: 500mm
10: *1000mm

Voltage
DC: For DC

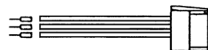
Type

GS : For GF type
single solenoid
GD : For GF type
double solenoid

For GF type single solenoid



For GF type double solenoid



(For common use with GF type of A05, A12, and A20)

Locking cover

A 0 5 P - L A



(For common use with all
A05, A12, and A20)

Color
A: Orange
(For solenoid A side)
B: Green
(For solenoid B side)

Sub-base

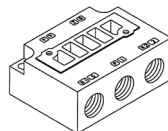
A 1 2 P - B - 0 2 X

Port size

02: Rc $\frac{1}{4}$
G2: *G $\frac{1}{4}$
N2: *NPT $\frac{1}{4}$
F2: *NPTF $\frac{1}{4}$
(For common use with
A05P)

Special Specifications

No mark: Standard
X : For external
pilot (with
port X)



(For common use with A12P)

Base gasket

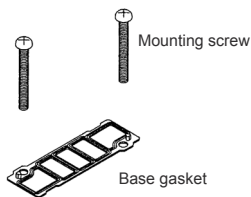
A 1 2 P X - G

Special Specifications

No mark: Standard
X : For external
pilot (with
port X)

Content of kit

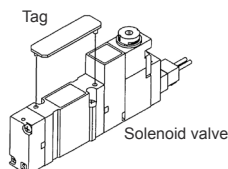
SG: Gasket &
mounting screws
G : Only gasket (Pack
of 10)
S : Only mounting
screw (Pack of 20)



(For common use with A12P)

Tag for solenoid valve

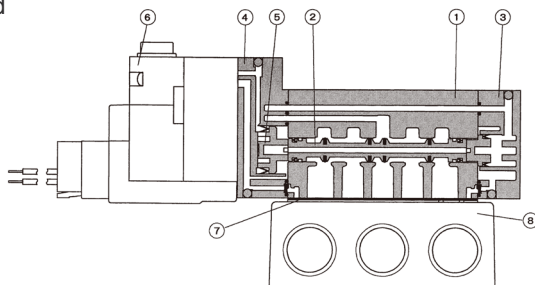
A 0 5 P - N (Pack of 10)



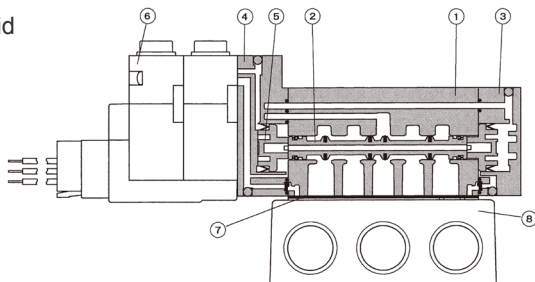
(For common use with sub-base mounting type of
A05, A12, and A20)

* : Made to order

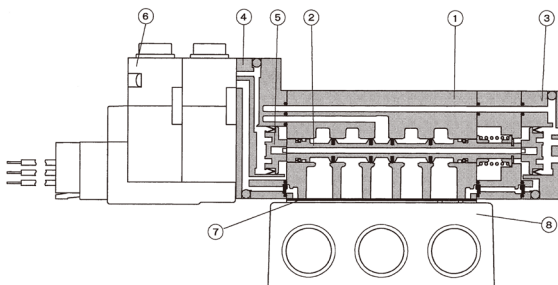
◎ 2-position Single solenoid



◎ 2-position Double solenoid



◎ 3-position Closed center
3-position ABR connect
3-position PAB connect



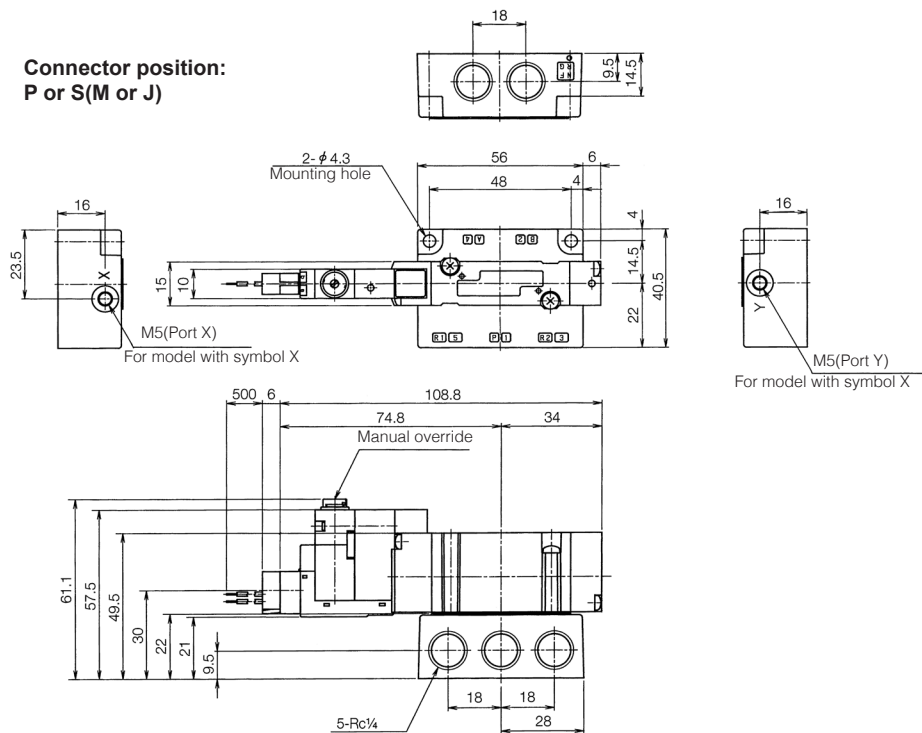
Main Component

| No. | Description | Material |
|-----|----------------|------------------------|
| 1 | Body | Zinc die-casting |
| 2 | Spool assembly | Aluminium alloy/NBR |
| 3 | End cover | Resin |
| 4 | Piston head | Resin |
| 5 | Piston | Resin |
| 6 | Pilot valve | Refer to A00 Series |
| 7 | Base gasket | NBR |
| 8 | Sub-base | Alluminium die-casting |

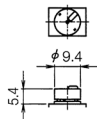
A12GS25

(Unit: mm)

**Connector position:
P or S(M or J)**



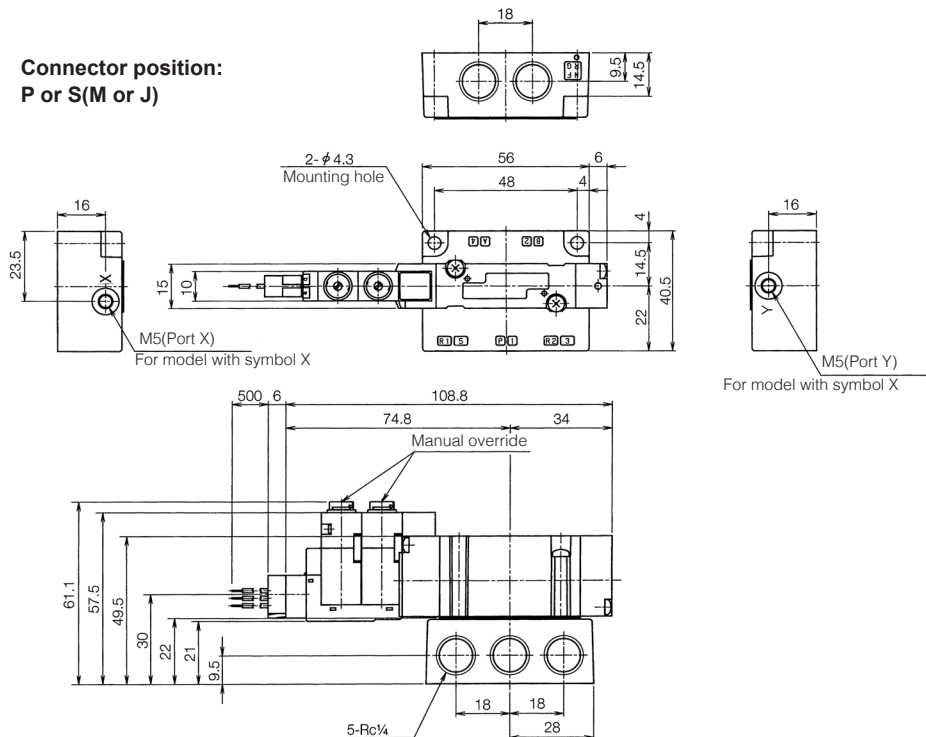
Manual locking cover



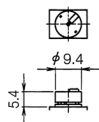
A12GD25

(Unit: mm)

**Connector position:
P or S (M or J)**



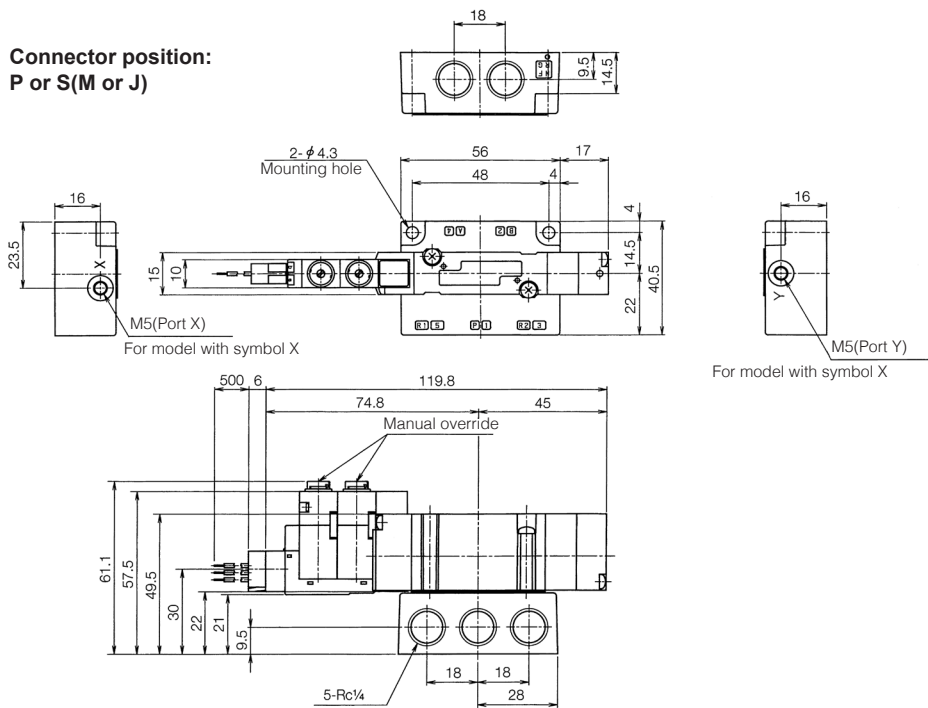
Manual locking cover



A12GD35, A12GE35, A12GO35

(Unit: mm)

Connector position:
P or S(M or J)



Manual locking cover

