

RC06 Series

5 Port Pilot Operated Solenoid Valve
Rubber Seal/In-line Mounting type

RCS2406

2-position, single solenoid

RCD2406

2-position, double solenoid

RCD3406

3-position, closed center

RCE3406

3-position, ABR connect

RCO3406

3-position, PAB connect



Specifications

Model No.	Unit	RCS2406	RCD2406	RCD3406 RCE3406	RCO3406
Fluid		Non-lubricated/lubricated air			
Port size		Ports 1, 2 & 4: RC $\frac{1}{4}$		Ports 3 & 5: RC $\frac{1}{8}$	
Effective area	mm ²	12		11	
Cv value		0.65		0.60	
Operating ambient temperature	°C	-5 ~ 50			
Pressure range	MPa	0.2 ~ 0.8			
Maximum frequency	cycle/min	240		180	
0.5Mpa response time	s	ON 0.021 OFF 0.021	ON 0.015	ON 0.025 OFF 0.035	
Rated voltage	V	AC110, 220, DC24			
Grade of insulation		JIS grade B			
Permissible voltage fluctuation	%	AC \pm 10, DC+10 - 15			
Rated frequency	Hz	50 / 60			
Power consumption	AC	Holding	50Hz	VA	(110 / 220) 3.2
			60Hz	VA	(110 / 220) 2.6
		Inrush	50Hz	VA	(110 / 220) 5
			60Hz	VA	(110 / 220) 4.5
Power consumption DC	W	2			
Wiring		Lead wire, Grommet with terminal, Conduit with terminal, DIN connector			
Mass	kg	0.14	0.21	0.3	0.3

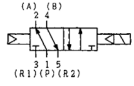


- Supply complete-dry air to avoid freezing when temperature of valve site falls below 5°C
- Response time shown above is in accordance with JIB B 8375
- Effective area shown above is the value between port 1 and 2, 4

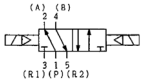
RCS2406 - **02** - **110 L** | | |

Model No.

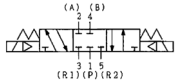
PCS2406



PCD2406



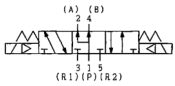
PCD3406



PCE3406



PCO3406



Special specifications

No mark : Standard
(Internal pilot)
B : With mounting bracket

Manual override

No mark : Standard
(Non locking)
※ L : With locking button

Wiring

L : Lead wire
G : Grommet with terminal
C : Conduit with terminal
※ GK : Grommet with surge suppressor
※ CK : Conduit with surge suppressor
D : DIN connector
DK : DIN connector with surge suppressor

Voltage

110 : AC110V
220 : AC220V
D24 : DC24V

Port size

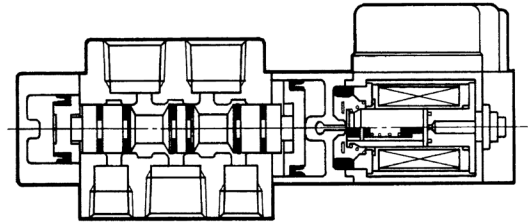
02: RC1/4

※ : Made to order

PC/RC06, 08, 15

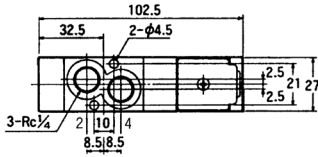
Construction

© RCS2406

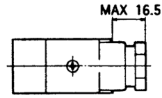
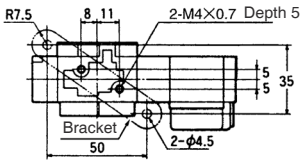
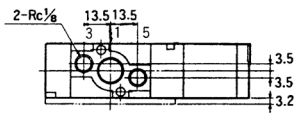
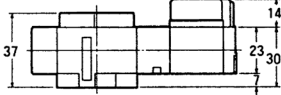


RCS2406

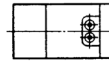
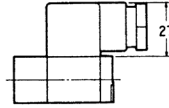
(Unit: mm)



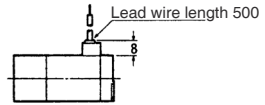
Type G



Type C

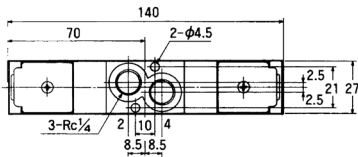


Type L

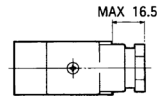
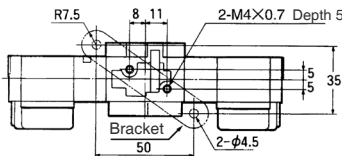
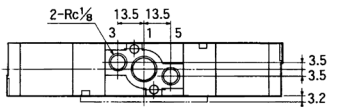
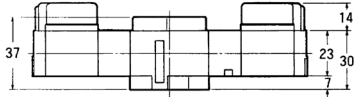


RCD2406

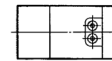
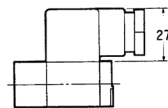
(Unit: mm)



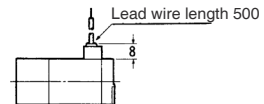
Type G



Type C



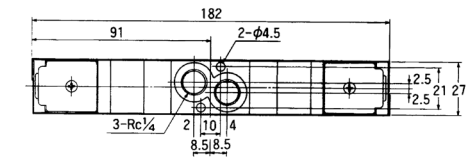
Type L



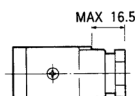
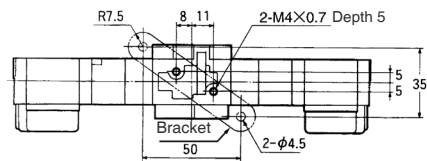
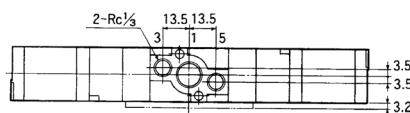
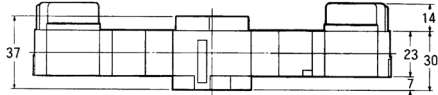
RCD3406 , RCE3406 , RCO3406

(Unit: mm)

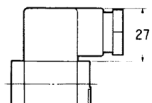
PC/RC06, 08, 15



Type G



Type C



Type L

