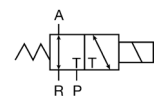


AS307

3-Port Direct Operated Solenoid Valves
Poppet Seal

AS307
3-port 2-position single solenoid

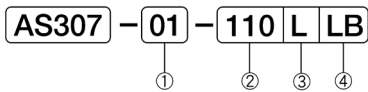
JIS Symbol



- Can withstand long-hour operation
- Compact with large flow rate
- Long usage life
- Corresponding electronic control



Representation



① Port size

- 01: Rc $\frac{1}{8}$
- 02: Rc $\frac{1}{4}$

② Voltage

- 110 : AC110V
- 220 : AC220V
- D24 : DC24V

③ Wiring

- L: Lead wire
- D: DIN connector

④ Manual override

- No mark: Without locking button
- L : With locking button

Specifications

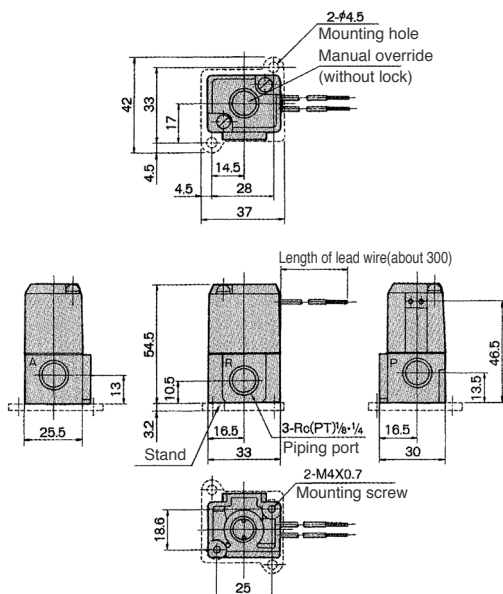
Model No.			Unit	AS307	
Fluid				Non-lubricated/ lubricated air	
Port size				Rc%, Rc¼	
Effective area			mm²	4	
Operating ambient temperature			°C	0~50	
Operating pressure range			MPa	0~0.9	
Response time(at 0.5MPa)			s	0.02	
Fixed position				Without limit	
Manual button				Without lock	
Shock			m/s²	150/50	
Wiring				Lead wire, DIN connector	
Permission voltage fluctuation			%	±10	
Apparent power	AC	Activation	50Hz	VA	12.7
			60Hz	VA	10.7
		Continuous	50Hz	VA	7.6
			60Hz	VA	5.4
Power consumption DC			W	4.8, with light 5	
Mass			kg	0.14	



- Supply complete-dry air to avoid freezing when temperature of valve site falls below 5°C
- Response time shown above is in accordance with JIB B 8375
- Effective area shown above is a value between ports 1 and 2, 4
- Mass in bracket()shown with Rc $\frac{1}{4}$ ported sub-base.

AS307(L type)

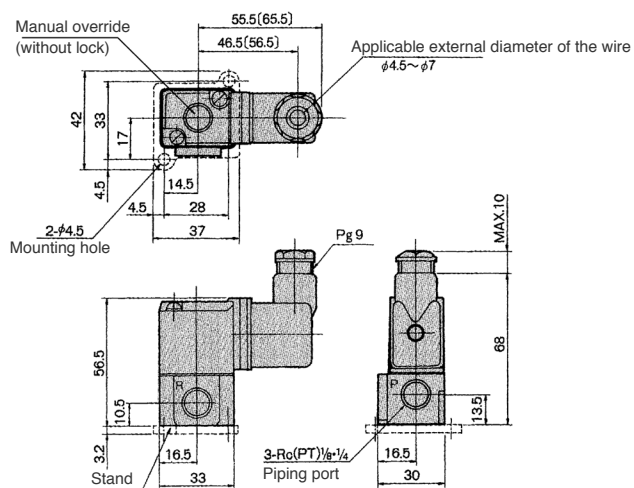
(Unit: mm)



A

AS307(D type)

(Unit: mm)



() Value within brackets is the size with indicator and over voltage protection device