

MF□ - TI1, TC1

Individual Wiring Type Manifold
Separate Type

MF□-TI1
Common SUP, individual EXH,
ports 2 on the side

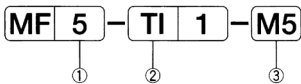
MF□-TC1
Common SUP, common EXH,
ports 2 on the side



Manifold Specifications

Type of manifold		MF□-TI1-01	MF□-TC1-01
		Common SUP, individual EXH	Common SUP, common EXH
Port size	Port 1	Rc%	Rc%
	Port 3, 5	—	Rc%
	Port 2, 4	Rc%	Rc%
Number of stations		2~20	2~20
Mountable solenoid valve		SS231-NB	SS231-MF

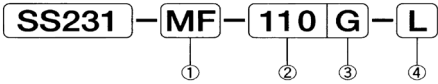
Ordering instructions



① Number of stations
2 : 2 station
⋮
10 : 10 station

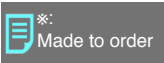
② Type of manifold
TI: Common SUP,individual EXH
TC: Common SUP,common EXH

③ Port 2 size
01: Rc%



① Type of solenoid valve
NB: For TI
MF: For TC

② Voltage
110 : AC110V
220 : AC220V
D24 : DC24V



③ Wiring
L : Lead wire
G : Grommet with terminal
C : Conduit with terminal
*GK: Grommet with surge suppressor
*CK: Conduit with surge suppressor
D : DIN connector

④ Manual override
No mark: Without locking button
L : With locking button

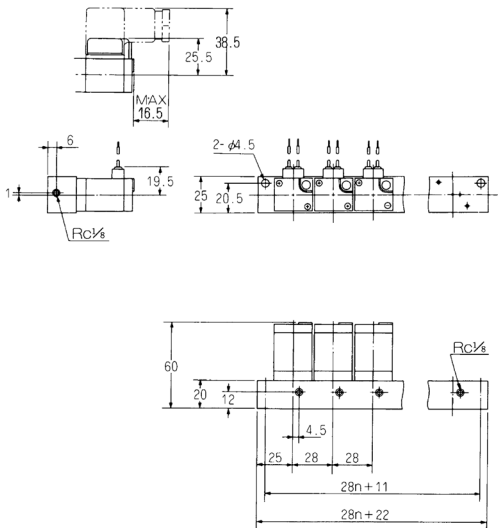
Tagging method

- Specify the type and number of manifolds and solenoid valves, as well as number of blank plate in accordance with the following example of description.

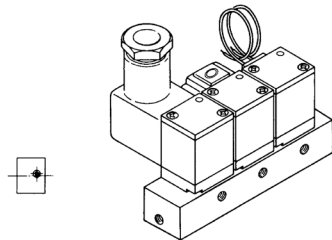
Example:
MF5-TI1-1 1 pcs.
SS231-MF-110G 5 pcs.

MF□-TI1-01

(Unit: mm)



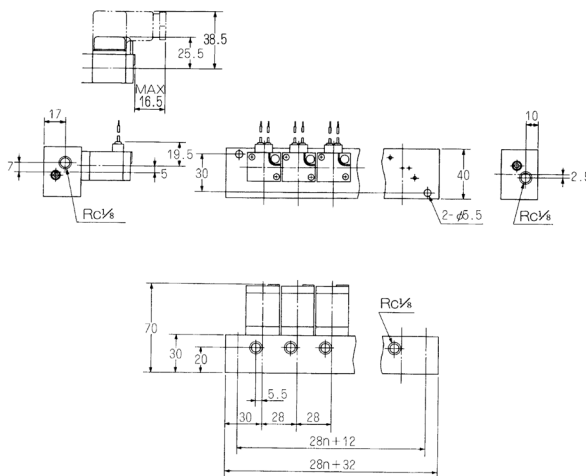
Specifications for connection



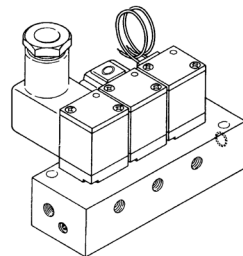
- Port 1: Dimension figure left side
port Rc $\frac{1}{8}$
- Port 2: Dimension figure front side
port Rc $\frac{1}{8}$

MF□-TC1-01(Made to order)

(Unit: mm)



Specifications for connection



- Port 1: Dimension figure left side
port Rc1%
- Port 2: Dimension figure front side
port Rc1%
- Port 3: Dimension figure right side
port Rc1%