

VM6 Series

5 Port Air Operated Valve
Metal Seal/Sub-base Mounting Type

VMS246

2-position, single sided

VMD246

2-position, double sided

VMD346

3-position, closed center

VME346

3-position, ABR connect



Specifications

Model No.	Unit	VMS246	VMD246	VMD346	VME346
Fluid		Non-lubricated/lubricated air			
Port size		Rc $\frac{1}{8}$			
Sonic-speed transmission ^③	dm ³ /(s·bar)	1.30			
Critical pressure ratio ^③		0.12			
Effective area ^③	mm ²	6.5			
Operating ambient temperature	°C	-5~70 ^①			
Operating pressure range	MPa	-0.1~1			
Pilot pressure	MPa	0.15~1 ^②			
Mass	kg	0.1	0.115	0.135	0.135



1. When the temperature falls below 5 °C, please provide air dryer to prevent water frozen.
2. Pilot pressure must remain greater than the working pressure. (Pilot pressure ≥ Working pressure).
3. The value shown in sonic-speed transmission, critical pressure ratio, effective area, Cv value represent the value of Port 1 → 4.

Representation

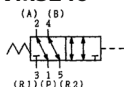
VMS246 - **M5**

Model No.

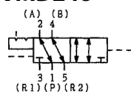
Port size

NB: Without sub-base
01: Rc $\frac{1}{8}$

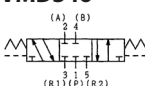
VMS246



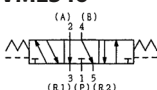
VMD246



VMD346



VME346

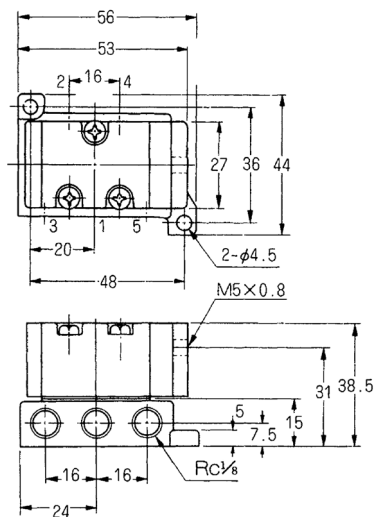


Backup

Sub-base, sub-base gasket, spring are the same as those of PM6 Series.

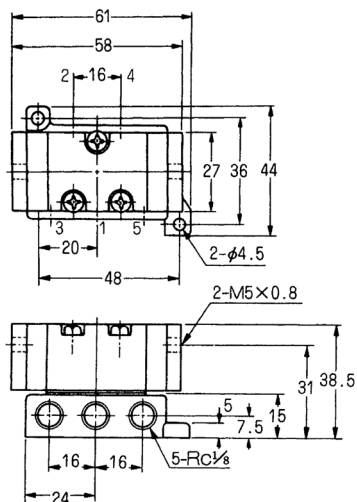
VMS246

(Unit: mm)



VMD246

(Unit: mm)



VMD346, VME346

(Unit: mm)

