

VM08 Series

5 Port Air Operated Valve
Metal Seal/Sub-base Mounting Type

VMS2408

2-position, single sided

VMD2408

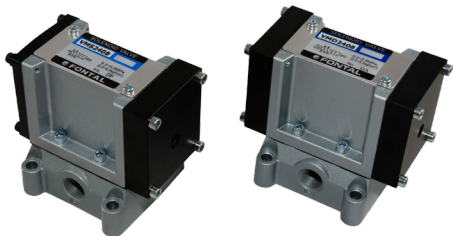
2-position, single sided

VMD3408

3-position, closed center

VME3408

3-position, ABR connect



Specifications

Model No.	Unit	VMS2408	VMD2408	VMD3408	VME3408
Fluid		Non-lubricated/lubricated air			
Port size		Rc1/4, 3/8			
Sonic-speed transmission㊟	dm³/(s·bar)	6.00		5.00	
Critical pressure ratio㊟		0.22		0.2	
Effective area㊟	mm²	50		25	
Operating ambient temperature	℃	-5~70❶			
Operating pressure range	MPa	-0.1~1			
Pilot pressure	MPa	0.2~0.8㉔			
Mass	kg	0.83	0.95	1.05	1.05



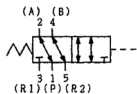
- When the temperature falls below 5 °C, please provide air dryer to prevent water frozen.
- Pilot pressure must remain greater than the working pressure. (Pilot pressure ≥ Working pressure).
- The value shown in sonic-speed transmission, critical pressure ratio, effective area, Cv value represent the value of Port 1 -> 4.

Representation

VMS2408 - 02

Model No.

VMS2408



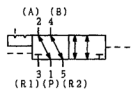
Port size

NB: Without sub-base

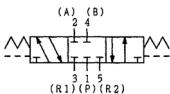
02: Rc1/4

03: Rc3/8

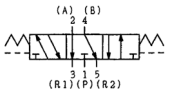
VMD2408



VMD3408



VME3408

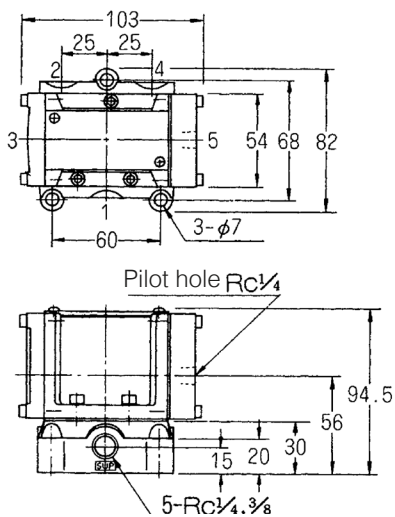


Backup

Sub-base, sub-base gasket, spring are the same as those of PM08 Series.

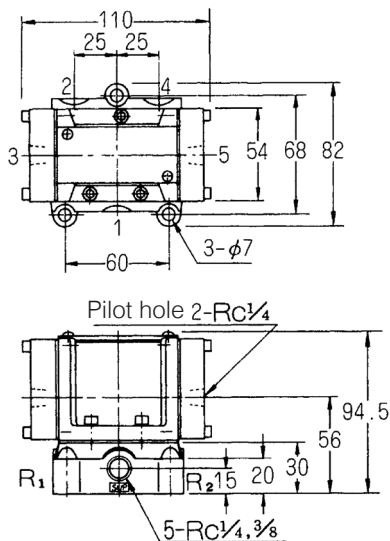
VMS2408

(Unit: mm)



VMD2408

(Unit: mm)



VMD3408, VME3408

(Unit: mm)

