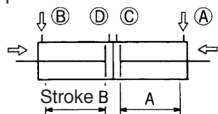


# JGD7 Series

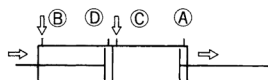
Air cylinder/Double rod, dual stroke cylinder

Ø20, Ø25, Ø32, Ø40

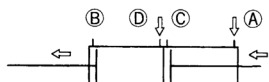
This cylinder is made of two cylinders in series. Strokes can be controlled in the three procedures.



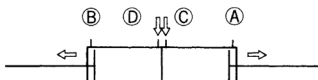
When pressure is supplied to port A and port B, axis will retract back to the original position.



When pressure is supplied to port B and port C, axis will retract to position D and the other to position A.

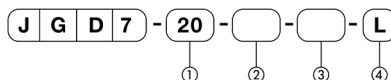


When pressure is supplied to port A and port D, axis will retract back to the stroke A and stretch the stroke A.



When pressure is supplied from port C and port D, axis will be on stroke A and stroke B

## Ordering Instructions



① Bore (mm)

② Stroke A (mm)

③ Stroke B (mm)

④ Mounting

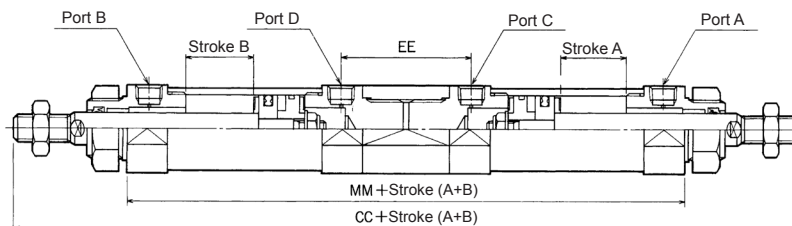
## Specifications

Action	Unit	Double-acting
Fluid		Non-lubricated air/ lubricated air
Pressure range	MPa(kgf/cm <sup>2</sup> )	0.1~0.7[1.0~7.1]
Temperature range	°C	5~60
Piston speed range	mm/s	50~500
Cushion		Built-in damper
Mounting		Standard type Axial foot Mounting plate Center trunnion

(Note) convert to SI unit: 0.1MPa = 1.02kgf/cm<sup>2</sup>

## Construction and Dimensions

(Unit: mm)



(Note)

Other dimensions are the same with J series Standard type.

Bore	CC	MM	EE
Ø20	220	152	44
Ø25	240	156	48
Ø32	308	212	56
Ø40	340	240	60