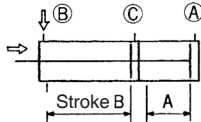


KGD2 Series

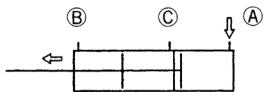
Pneumatic cylinder/Single rod, dual stroke cylinder

∅40, ∅50, ∅63, ∅80, ∅100

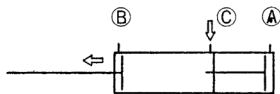
This cylinder is made of two cylinders in series. Strokes can be controlled in the two procedures.



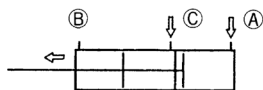
When pressure is supplied from port B, axis will retract back to the stroke between A and B.



When pressure is supplied from port A axis will only be on stroke A.

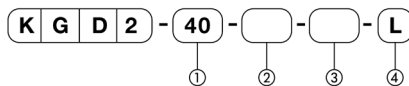


When pressure is supplied from port C axis will only be on stroke B



When pressure is supplied from port A and port C, axis will double output on stroke A

Ordering Instructions



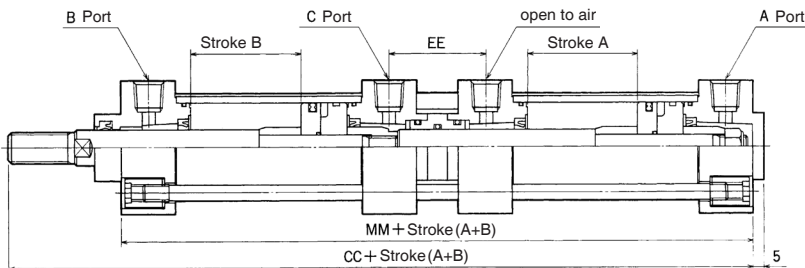
- ① Bore (mm)
- ② Stroke A (mm)
- ③ Stroke B (mm)
- ④ Mounting

Specifications

Action	Unit	Double-acting
Fluid		Non-lubricated air/ lubricated air
Pressure range	MPa(kgf/cm ²)	0.05~1[0.51~10.2]
Temperature range	°C	5~60
Piston speed range	mm/s	50~500
Cushion		Standard
Mounting		Standard type Axial foot Rod side flange Head side flange Eye Clevis Center trunnion

Construction and dimensions

(Unit: mm)



(Note)
Other dimensions are the same with K series
Standard type.

Bore	CC	EE	MM
∅40	238	44	187
∅50	255.5	46	198
∅63	266.5	46	206
∅80	312	50	238
∅100	321	50	242