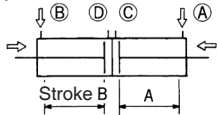


KGD7 Series

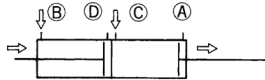
Air cylinder/Double rod type, Dual stroke cylinder

Ø40, Ø50, Ø63, Ø80, Ø100

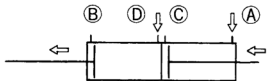
This cylinder is made of two cylinders in series. Strokes can be controlled in the three procedures.



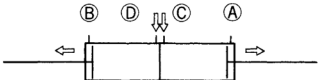
When pressure is supplied to port A and port B, axis will retract back to the original position.



When pressure is supplied to port B and port C, axis will retract to position D and the other to position A.

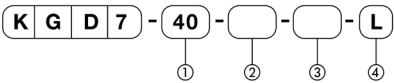


When pressure is supplied to port A and port D, axis will retract back to the stroke A and stretch the stroke A.



When pressure is supplied from port C and port D, axis will be on stroke A and stroke B

Ordering Instructions



① Bore (mm)

② Stroke A (mm)

③ Stroke B (mm)

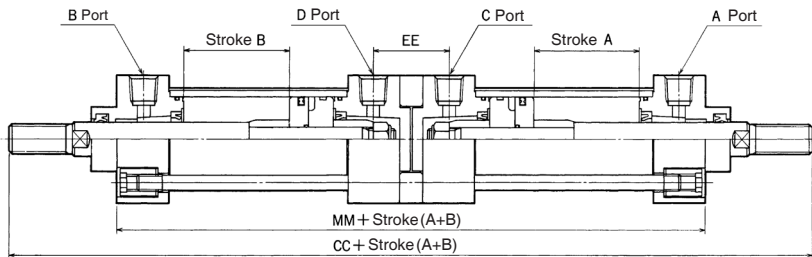
④ Mounting

Specifications

Action	Unit	Double - acting
Fluid		Non-lubricated air/ lubricated air
Pressure range	MPa(kgf/cm ²)	0.05 ~ 1 [0.51 ~ 10.2]
Temperature range	°C	5 ~ 60
Piston speed range	mm/s	50 ~ 500
Cushion		Standard
Mounting		Standard type Axial foot Rod side flange Center trunnion

Construction and dimensions

(Unit: mm)



(Note)
Other dimensions are the same with K series
Standard type.

Bore	CC	EE	MM
Ø40	281	36	179
Ø50	304	37	189
Ø63	318	37	197
Ø80	379	43	231
Ø100	393	43	235