

VM6 Series

5 Port Air Operated Valve
Metal Seal/Sub-base Mounting Type

VMS246

2-position, single sided

VMD246

2-position, double sided

VMD346

3-position, closed center

VME346

3-position, ABR connect



Specifications

Model No.	Unit	VMS246	VMD246	VMD346	VME346
Fluid		Non-lubricated/lubricated air			
Port size		Rc $\frac{1}{8}$			
Sonic-speed transmission ^③	dm ³ /(s·bar)	1.30			
Critical pressure ratio ^③		0.12			
Effective area ^③	mm ²	6.5			
Operating ambient temperature	°C	-5~70 ^①			
Operating pressure range	MPa	-0.1~1			
Pilot pressure	MPa	0.15~1 ^②			
Mass	kg	0.1	0.115	0.135	0.135



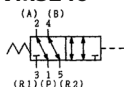
1. When the temperature falls below 5 °C, please provide air dryer to prevent water frozen.
2. Pilot pressure must remain greater than the working pressure. (Pilot pressure ≥ Working pressure).
3. The value shown in sonic-speed transmission, critical pressure ratio, effective area, Cv value represent the value of Port 1 -> 4.

Representation

VMS246 - **M5**

Model No.

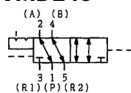
VMS246



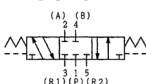
Port size

NB: Without sub-base
01: Rc $\frac{1}{8}$

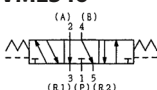
VMD246



VMD346



VME346

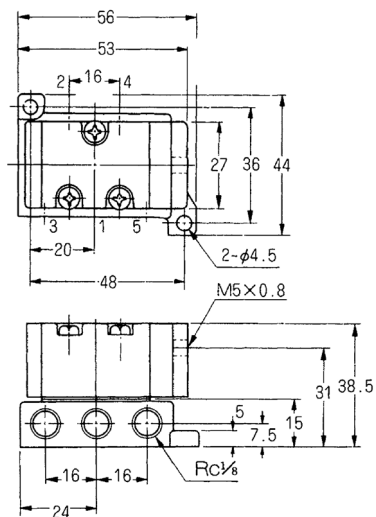


Backup

Sub-base, sub-base gasket, spring are the same as those of PM6 Series.

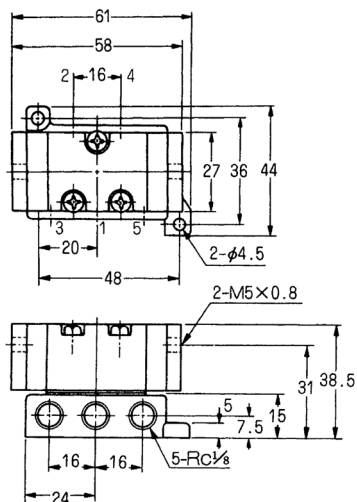
VMS246

(Unit: mm)



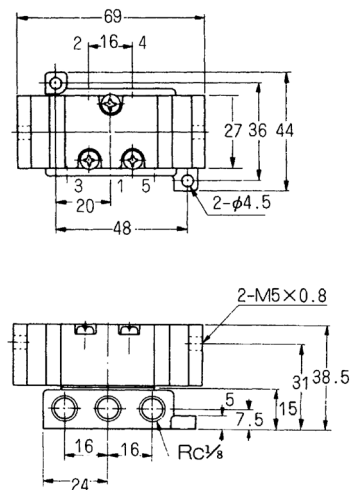
VMD246

(Unit: mm)



VMD346, VME346

(Unit: mm)



VM06 Series

5 Port Air Operated Valve
Metal Seal/Sub-base Mounting Type

VMS2406

2-position, single sided

VMD2406

2-position, single sided

VMD3406

3-position, closed center

VME3406

3-position, ABR connect



Specifications

Model No.	Unit	VMS2406	VMD2406	VMD3406	VME3406
Fluid		Non-lubricated/lubricated air			
Port size		Rc¼			
Sonic-speed transmission㉑	dm³/(s·bar)	2.50		2.40	
Critical pressure ratio㉒		0.2		0.18	
Effective area㉓	mm²	12.5		12	
Operating ambient temperature	℃	-5~70㉔			
Operating pressure range	MPa	-0.1~1			
Pilot pressure	MPa	0.2~0.8㉕			
Mass	kg	0.34	0.38	0.38	0.38



1. When the temperature falls below 5 °C, please provide air dryer to prevent water frozen.
2. Pilot pressure must remain greater than the working pressure. (Pilot pressure ≥ Working pressure).
3. The value shown in sonic-speed transmission, critical pressure ratio, effective area, Cv value represent the value of Port 1 → 4.

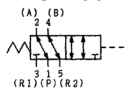
Representation

VMS2406

02

Model No.

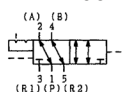
VMS2406



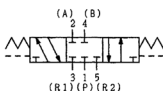
Port size

NB: Without sub-base
02: Rc1/4

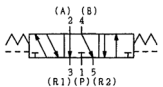
VMD2406



VMD3406



VME3406

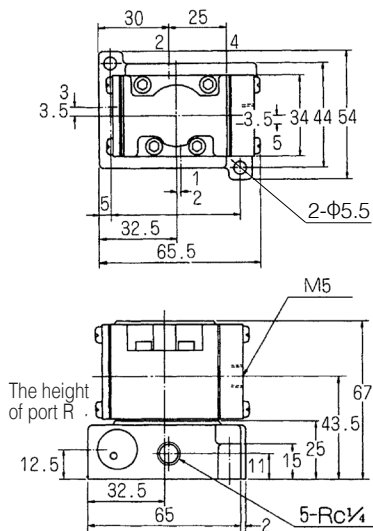


Backup

Sub-base, sub-base gasket, spring are the same as those of PM06 Series.

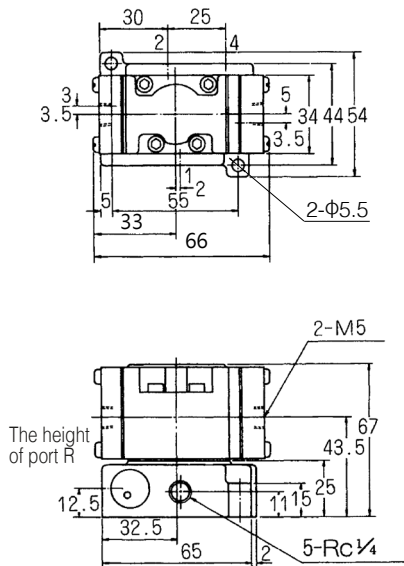
VMS2406

(Unit: mm)



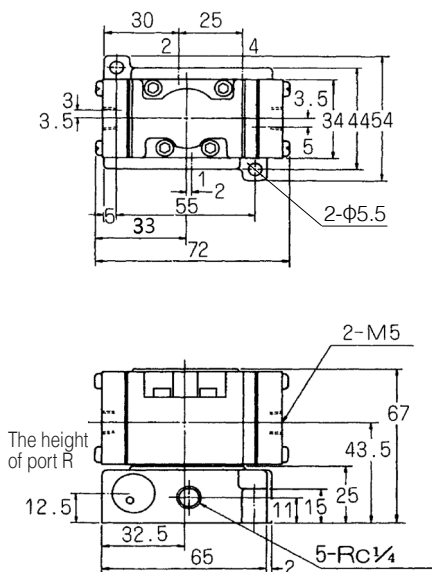
VMD2406

(Unit: mm)



VMD3406, VME3406

(Unit: mm)



VM08 Series

5 Port Air Operated Valve
Metal Seal/Sub-base Mounting Type

VMS2408

2-position, single sided

VMD2408

2-position, single sided

VMD3408

3-position, closed center

VME3408

3-position, ABR connect



Specifications

Model No.	Unit	VMS2408	VMD2408	VMD3408	VME3408
Fluid		Non-lubricated/lubricated air			
Port size		Rc1/4, %			
Sonic-speed transmission㊟	dm³/(s·bar)	6.00		5.00	
Critical pressure ratio㊟		0.22		0.2	
Effective area㊟	mm²	50		25	
Operating ambient temperature	°C	-5~70❶			
Operating pressure range	MPa	-0.1~1			
Pilot pressure	MPa	0.2~0.8❷			
Mass	kg	0.83	0.95	1.05	1.05



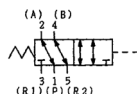
1. When the temperature falls below 5 °C, please provide air dryer to prevent water frozen.
2. Pilot pressure must remain greater than the working pressure. (Pilot pressure ≥ Working pressure).
3. The value shown in sonic-speed transmission, critical pressure ratio, effective area, Cv value represent the value of Port 1 -> 4.

Representation

VMS2408 - 02

Model No.

VMS2408



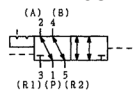
Port size

NB: Without sub-base

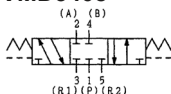
02: Rc1/4

03: Rc3/8

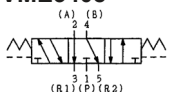
VMD2408



VMD3408



VME3408

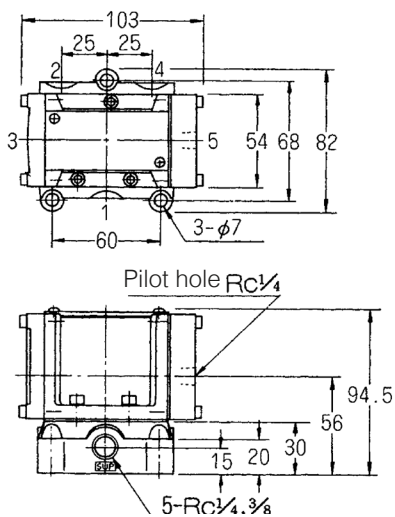


Backup

Sub-base, sub-base gasket, spring are the same as those of PM08 Series.

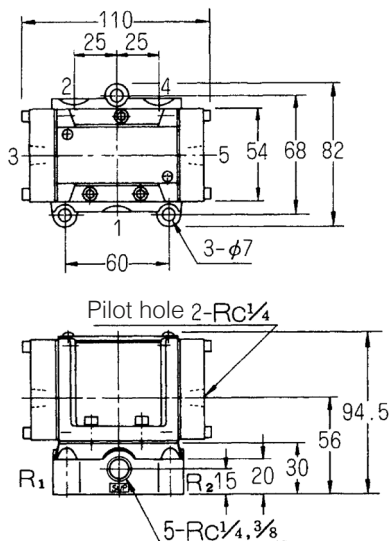
VMS2408

(Unit: mm)



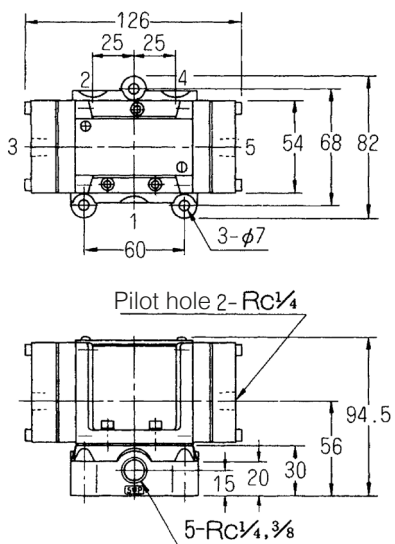
VMD2408

(Unit: mm)



VMD3408, VME3408

(Unit: mm)



VM10 Series

5 Port Air Operated Valve
Metal Seal/Sub-base Mounting Type

VMS2410

2-position, single sided

VMD2410

2-position, double sided

VMD3410

3-position, closed center

VME3410

3-position, ABR connect



Specifications

Model No.	Unit	VMS2410	VMD2410	VMD3410	VME3410
Fluid		Non-lubricated/lubricated air			
Port size		Rc ³ / ₈ , 1/2			
Sonic-speed transmission ^㊸	dm ³ /(s·bar)	10.00		10.00	
Critical pressure ratio ^㊹		0.2		0.18	
Effective area ^㊺	mm ²	50		50	
Operating ambient temperature	℃	-5~70 ^㊻			
Operating pressure range	MPa	-0.1~1			
Pilot pressure	MPa	0.2~0.8 ^㊼			
Mass	kg	1.45	1.45	1.75	1.75



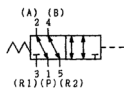
1. When the temperature falls below 5 °C, please provide air dryer to prevent water frozen.
2. Pilot pressure must remain greater than the working pressure. (Pilot pressure \geq Working pressure).
3. The value shown in sonic-speed transmission, critical pressure ratio, effective area, Cv value represent the value of Port 1 -> 4.

Representation

VMS2410 - 03

Model No.

VMS2410



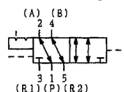
Port size

NB: Without sub-base

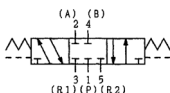
03: Rc $\frac{3}{8}$

04: Rc $\frac{1}{2}$

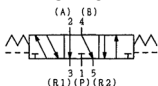
VMD2410



VMD3410



VME3410

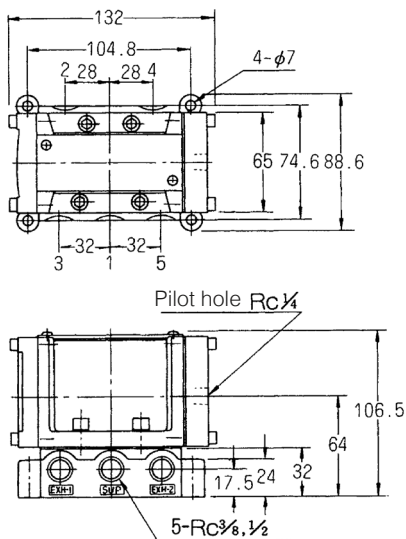


Backup

Sub-base, sub-base gasket, spring are the same as those of PM10 Series.

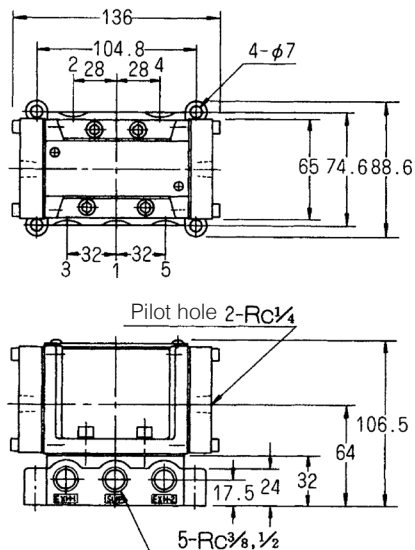
VMS2410

(Unit: mm)



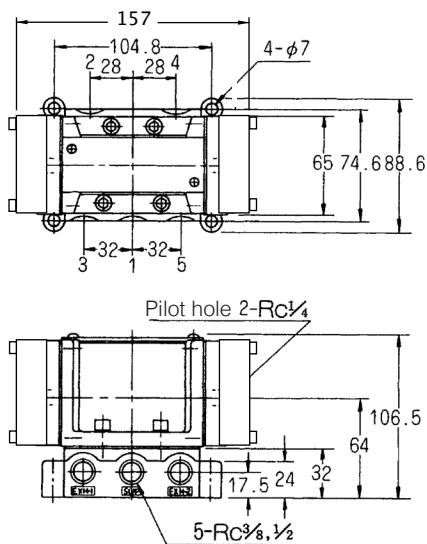
VMD2410

(Unit: mm)



VMD3410, VME3410

(Unit: mm)



VM15 Series

5 Port Air Operated Valve
Metal Seal/Sub-base Mounting Type

VMS2415

2-position, single sided

VMD2415

2-position, double sided

VMD3415

3-position, closed center

VME3415

3-position, ABR connect



Specifications

Model No.	Unit	VMS2415	VMD2415	VMD3415	VME3415
Fluid		Non-lubricated/lubricated air			
Port size		Rc½, ¾			
Sonic-speed transmission㉞	dm³/(s·bar)	15.00		15.00	
Critical pressure ratio㉞		0.22		0.21	
Effective area㉞	mm²	75		75	
Operating ambient temperature	℃	-5~70㉞			
Operating pressure range	MPa	-0.1~1			
Pilot pressure	MPa	0.2~0.8㉞			
Mass	kg	2.23	2.25	2.55	2.55



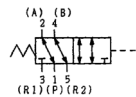
1. When the temperature falls below 5 °C, please provide air dryer to prevent water frozen.
2. Pilot pressure must remain greater than the working pressure. (Pilot pressure ≥ Working pressure).
3. The value shown in sonic-speed transmission, critical pressure ratio, effective area, Cv value represent the value of Port 1 -> 4.

Representation

VMS2415 - 04

Model No.

VMS2415



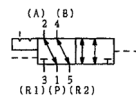
Port size

NB: Without sub-base

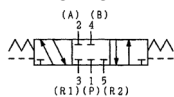
04: Rc½

06: Rc¾

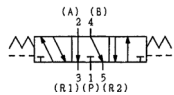
VMD2415



VMD3415



VME3415

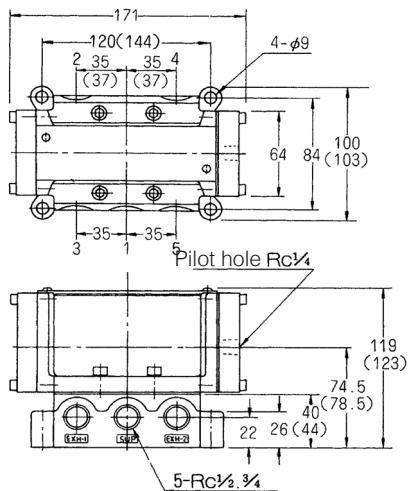


Backup

Sub-base, sub-base gasket, spring are the same as those of PM15 Series.

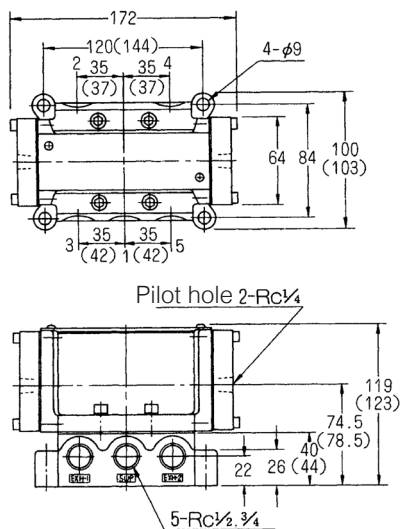
VMS2415

(Unit: mm)



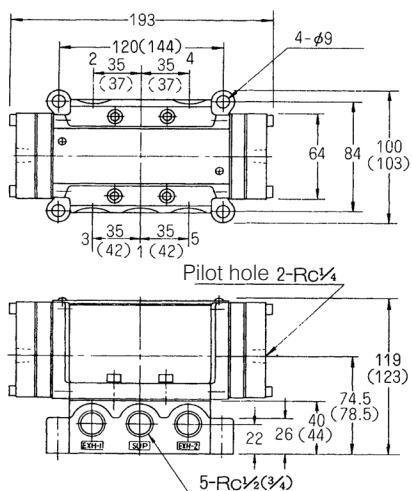
VMD2415

(Unit: mm)



VMD3415, VME3415

(Unit: mm)



Note : The value within bracket are those of Port Rc 3/4

VM25 Series

5 Port Air Operated Valve
Metal Seal/Sub-base Mounting Type

VMS2425

2-position, single sided

VMD2425

2-position, double sided

VMD3425

3-position, closed center

VME3425

3-position, ABR connect



Specifications

Model No.	Unit	VMS2425	VMD2425	VMD3425	VME3425
Fluid		Non-lubricated/lubricated air			
Port size		Rc¾, 1, 1¼			
Sonic-speed transmission①	dm³/(s·bar)	34(Rc¾), 40(Rc1), 42(Rc1¼)		3(Rc¾), 38(Rc1), 39(Rc1¼)	
Critical pressure ratio②		0.13(Rc¾, Rc1), 0.1(Rc1¼)		0.19(Rc¾, Rc1), 0.1(Rc1¼)	
Effective area③	mm²	170	200	210	165
Operating ambient temperature	°C	-5~70④			
Operating pressure range	MPa	-0.1~1			
Pilot pressure	MPa	0.2~0.8⑤			
Mass	kg	6.03	6.15	6.75	6.75



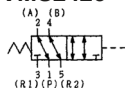
- When the temperature falls below 5 °C, please provide air dryer to prevent water frozen.
- Pilot pressure must remain greater than the working pressure. (Pilot pressure ≥ Working pressure).
- The value shown in sonic-speed transmission, critical pressure ratio, effective area, Cv value represent the value of Port 1 -> 4.

Representation

VMS2425 - 06

Model No.

VMS2425



Port size

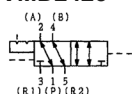
NB: Without sub-base

06: Rc¾

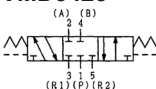
08: Rc1

10: Rc1¼

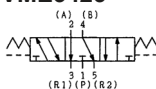
VMD2425



VMD3425



VME3425

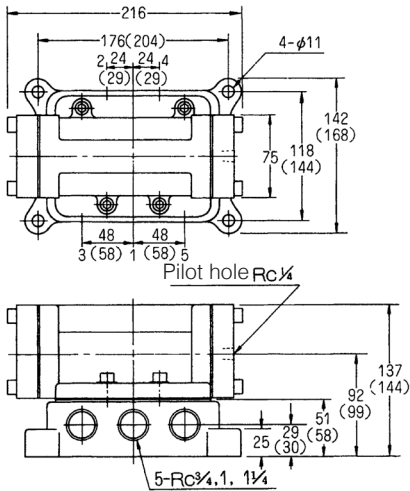


Backup

Sub-base, sub-base gasket, spring are the same as those of PM25 Series.

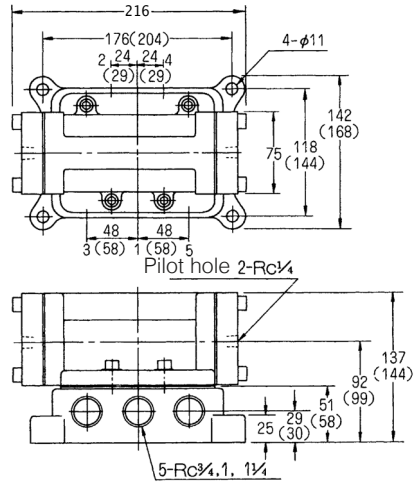
VMS2425

(Unit: mm)



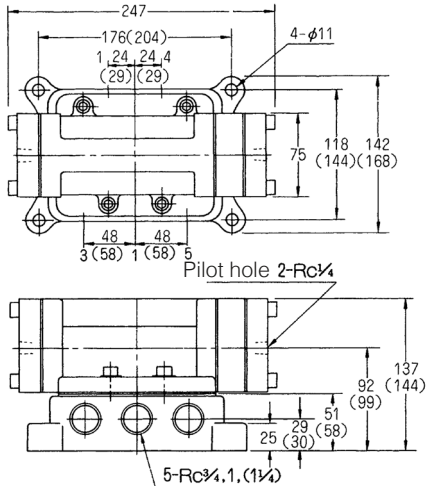
VMD2425

(Unit: mm)



VMD3425, VME3425

(Unit: mm)



Note : The value within bracket are those of Port Rc1¼